

2

Install the Pro Power Kit



ring

The Pro Power Kit ensures enough power is sent to your Ring Video Doorbell Pro.



Installing the Pro Power Kit

Working with your internal doorbell's wires might seem intimidating, but installation is easy!

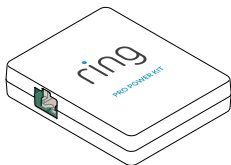
We'll walk you through every step, and if you need extra help you can always give us a call.

Online Help Center:
ring.com/help

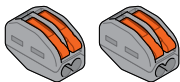
Ring Community Support:
1-800-656-1918
help@ring.com

Kit Components

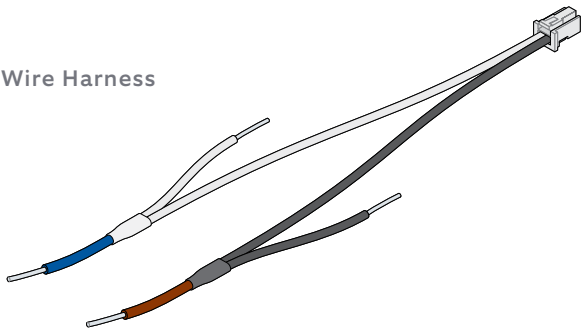
Pro Power Kit



Wire Clips

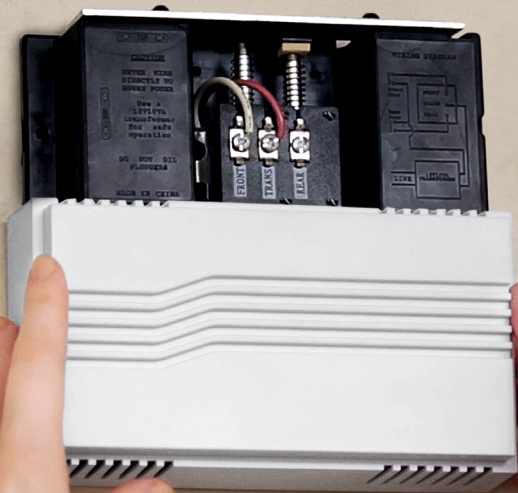


Wire Harness



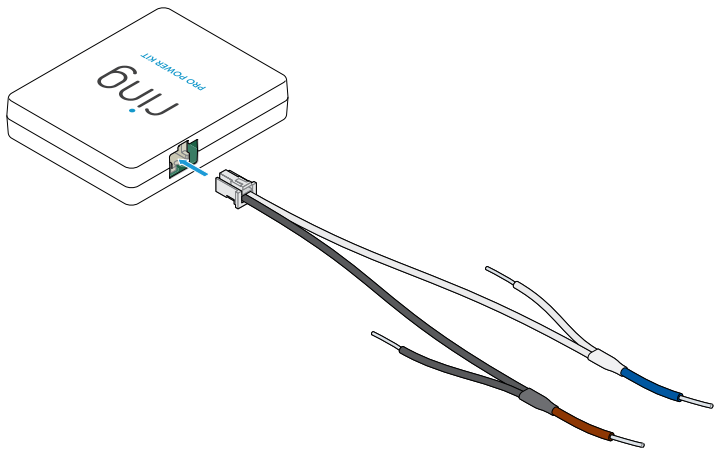
Step 1

Remove the cover on your internal doorbell.



Step 2

Connect the wire harness to the kit.

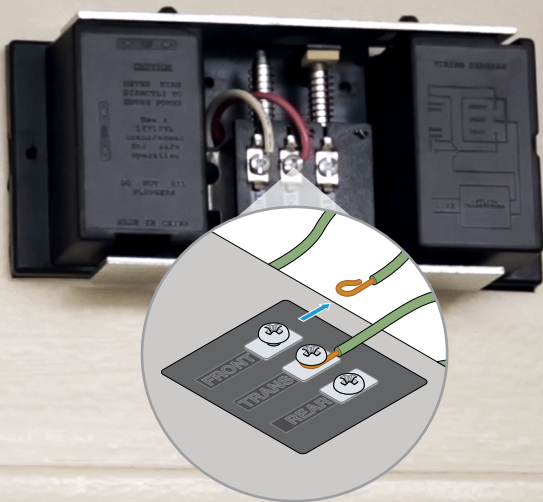


Step 3

Disconnect your doorbell's "Front" wire

Look for wires labeled "Front" and "Transformer."

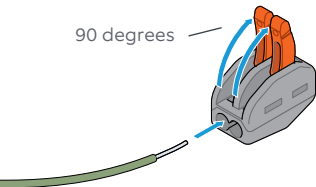
Loosen the screw on "Front" and disconnect the wire.



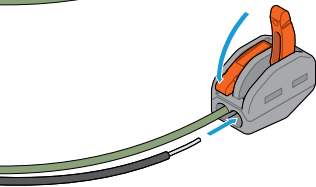
Step 4

Connect the “Front” wire to the wire harness

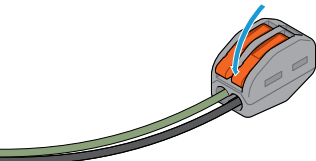
Use one of the wire clips to connect the “Front” wire to the black wire on the wire harness.



- a) Force the orange lever up. **Yes, you'll feel like they're going to break!** Insert the “Front” wire.



- b) Snap the orange lever down. The wire should feel secure.

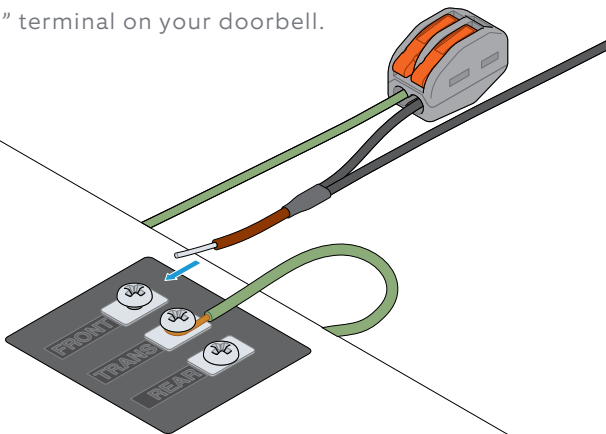


- c) Insert the black wire from the harness. Snap the other lever down.

Step 5

Connect the brown wire to your doorbell

Connect the brown end of the black wire to the “Front” terminal on your doorbell.

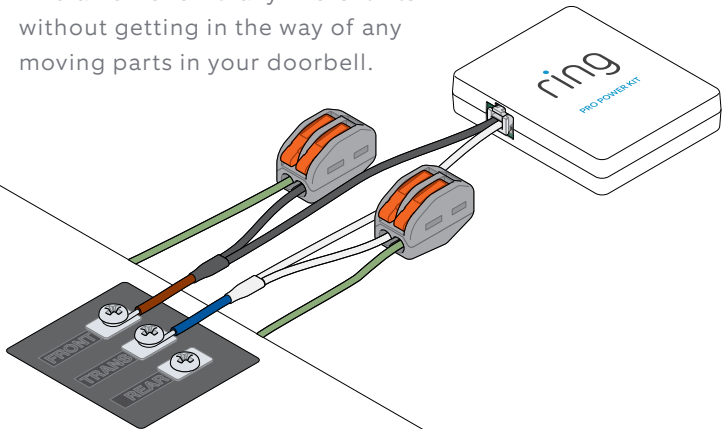


Then repeat this process with the blue/white wire attaching it to the “Transformer” terminal.

Step 6

Secure the Pro Power Kit

Find a home for it—anywhere it fits without getting in the way of any moving parts in your doorbell.



Use the double sided adhesive included in the package if necessary.

Step 7

Replace the cover on your internal doorbell.

Then restore power at the breaker, and return to the front of your home to perform the in-app setup.

