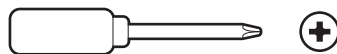


Hardware Needed

From Outdoor Cam Pro



Tools Needed

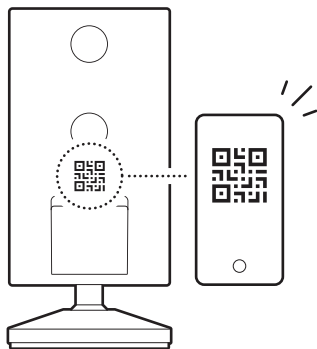


Phillips-head screwdriver

Mount installation

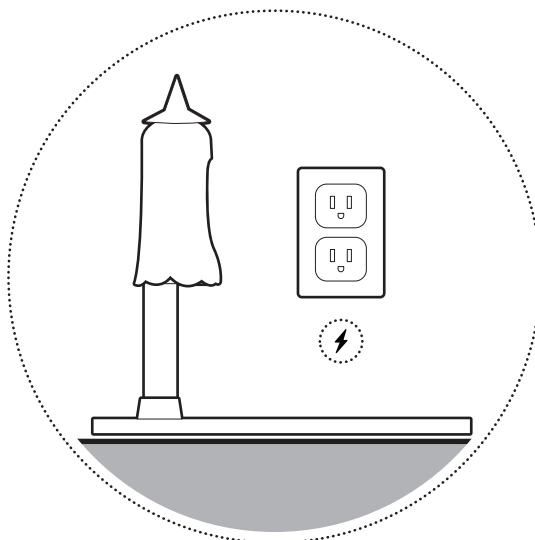
1.

Refer to your camera setup guide to set up your camera.



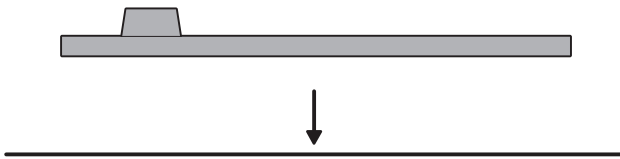
2.

Choose a location near an outlet.



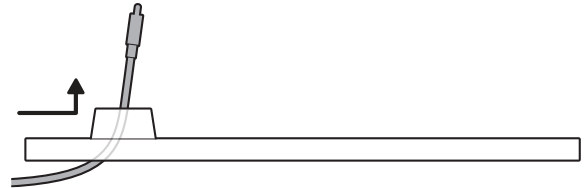
3.

Place the base on a sturdy, level surface.



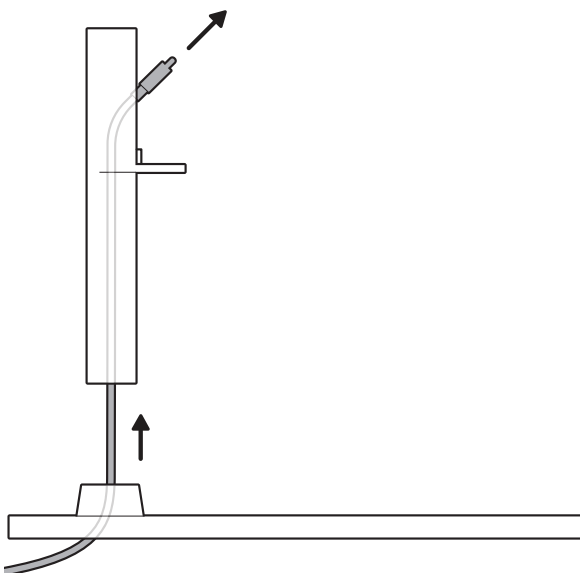
4.

Route the power cable through the hole at the bottom of the base.



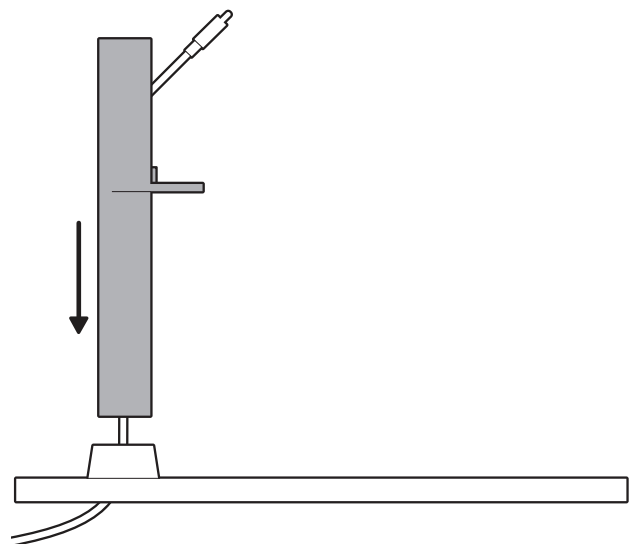
5.

Route the cable through the mount arm.



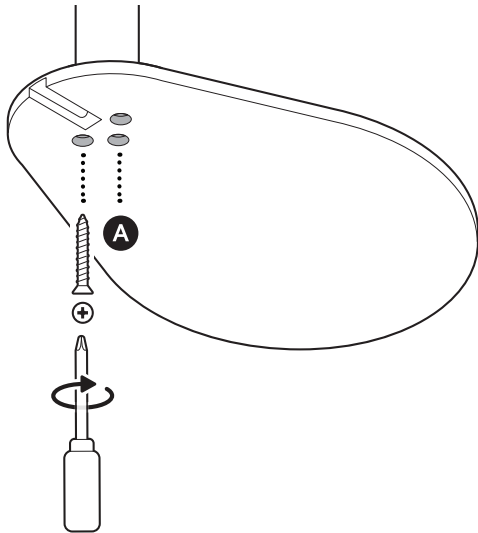
6.

Attach the mount arm onto the base.



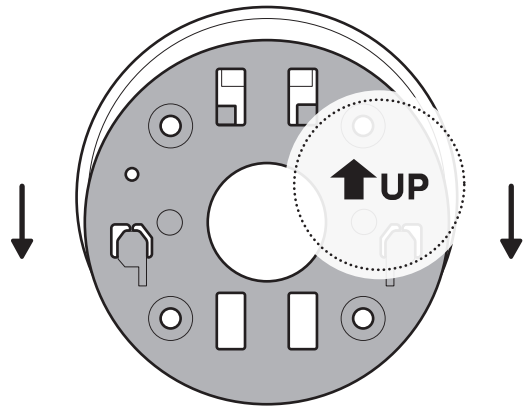
7.

Tighten the tapping screws included with your camera to secure.



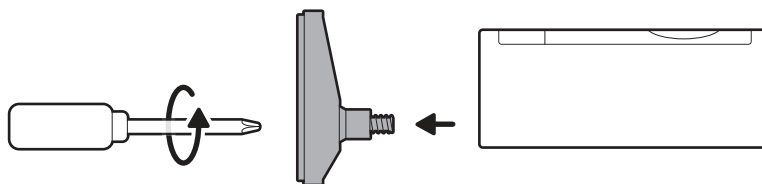
8.

Slide the mounting plate at the bottom of the camera mount in the direction opposite to the UP arrow to remove.



9.

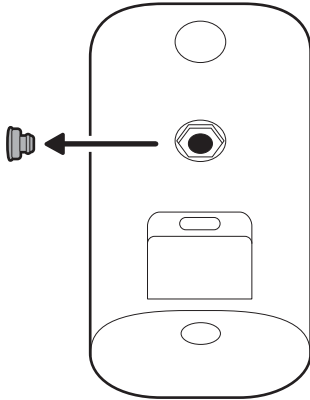
Unscrew to detach the camera mount.



10.

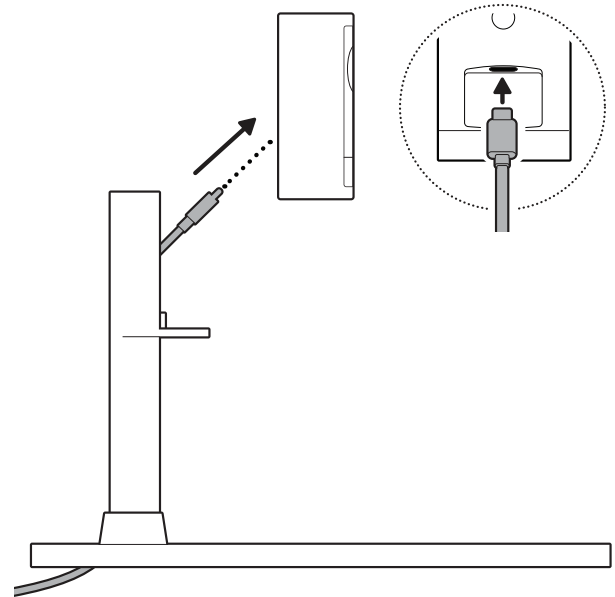
Remove the middle rubber cap on the back of your camera.

NOTE: Store the rubber cap in a safe place. Reinsert it when the hole is not in use.



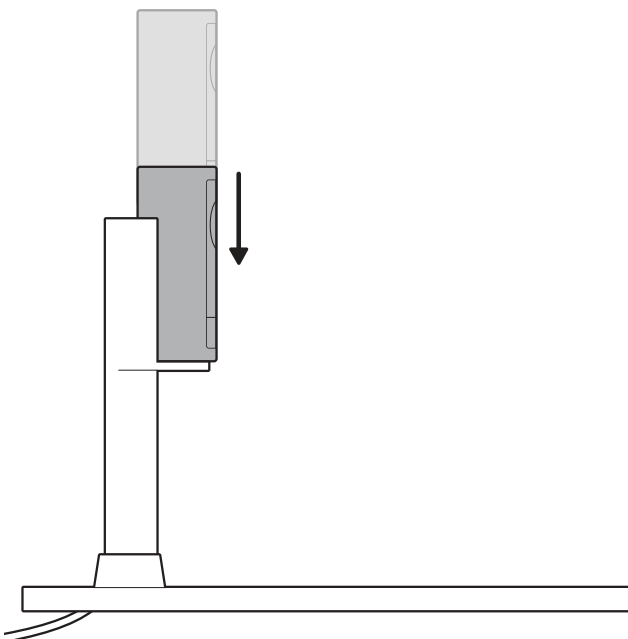
11.

Plug in the power cable, ensuring it is fully inserted.



12.

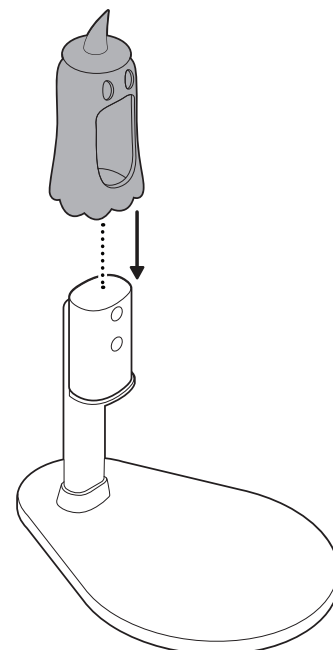
Slide your camera into the mount.



13.

Slide the decorative cover over your camera and the mount.

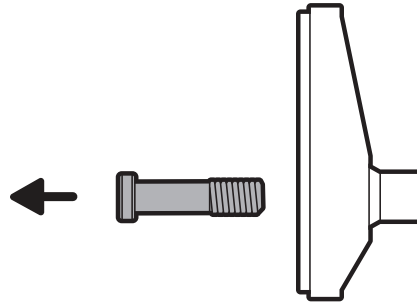
NOTE: Pull the sides of the cover and tilt it back slightly to slide it over your camera's speaker.



14.

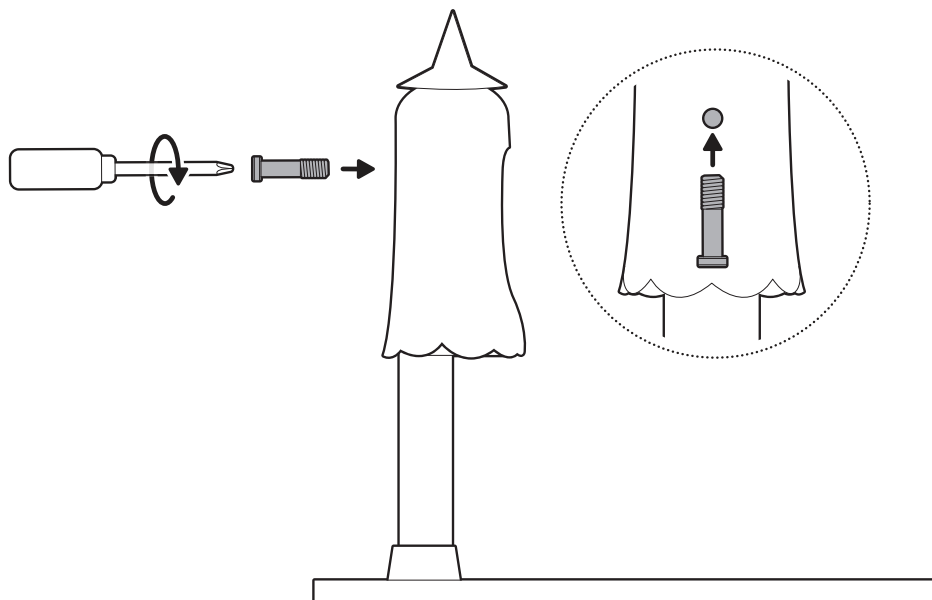
Unscrew to remove the screw from the bottom of the camera mount.

NOTE: Store the mount in a safe place.



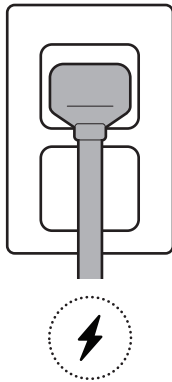
15.

Tighten the screw from the camera mount into the back of your camera to secure.



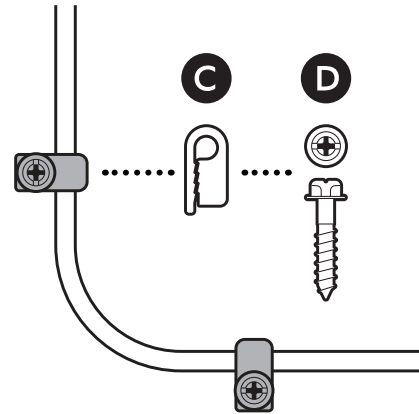
16.

Plug the power adapter into an outlet.



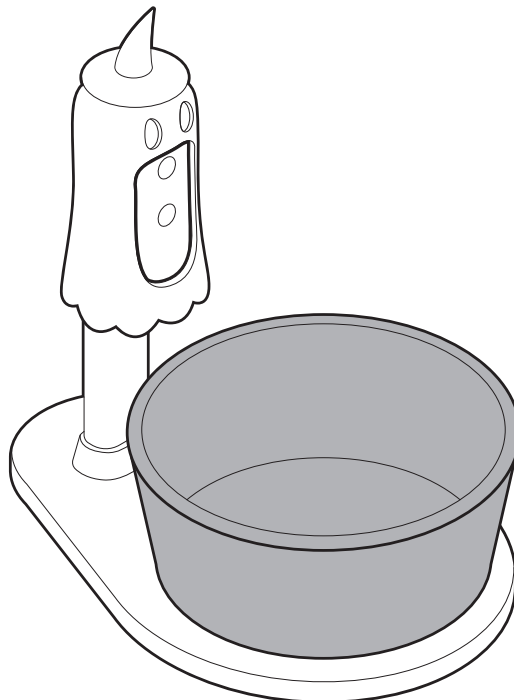
17.

Secure the cord to the ground, wall, railing, or other stationary surface to prevent tripping hazards. Position the cord away from walkways when possible.



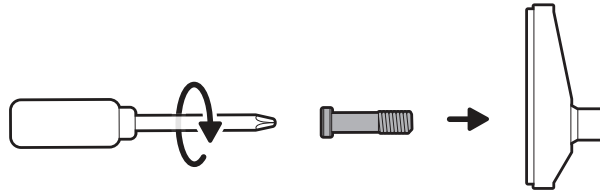
18.

Place the candy bowl on the base.



19.

When disassembling, reinsert the screw on the back of your camera into the bottom of the camera mount.



ring.com/contact



ring.com/help