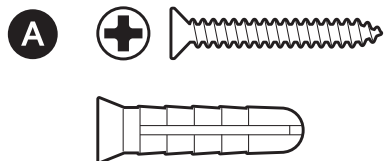


## Hardware included

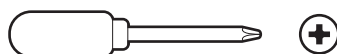


## Tools included

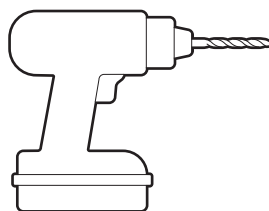


Removal tool

## Tools needed



Phillips-head screwdriver



Drill with a 1/4 in (6 mm) masonry bit (optional)

1.

Remove the protective wrap.



2.

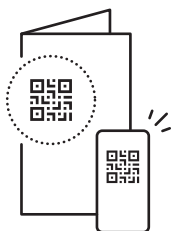
Download the Ring app.



3.

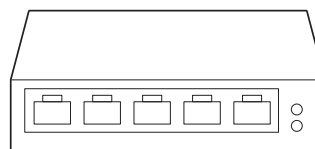
Scan the QR code.

**NOTE:** Before installation, ensure your Power over Ethernet (PoE) switch capable of PoE+ is active and connected to a functioning Category 5 or above Ethernet cable.



4.

Unplug your network cable from your PoE switch.

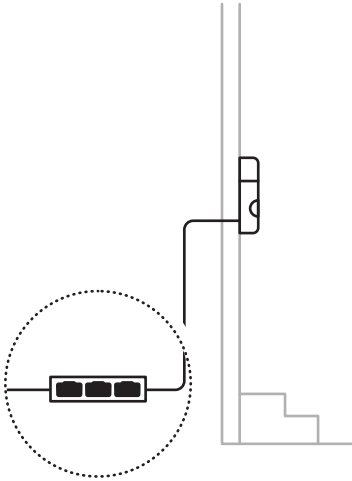


## Wall installation

### 1.

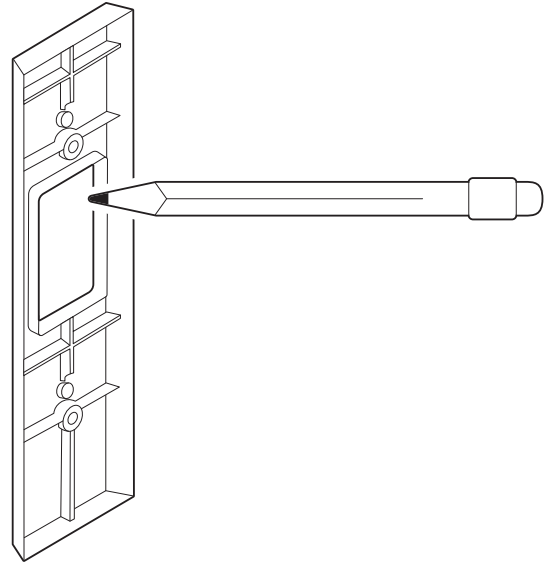
Choose a location for your doorbell within 3 m (10 ft) of the included PoE+ Adapter and 1.20 m (4 ft) above the ground.

**NOTE:** To install your doorbell, you will need to route the included USB-C cable from the PoE+ Adapter through the wall and to your doorbell. Remove your existing doorbell, if necessary.



### 2.

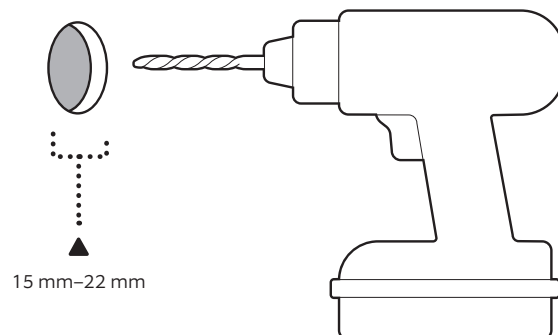
Use the included spacer as a guide to mark a hole for the USB-C cable, centered at the top.



### 3.

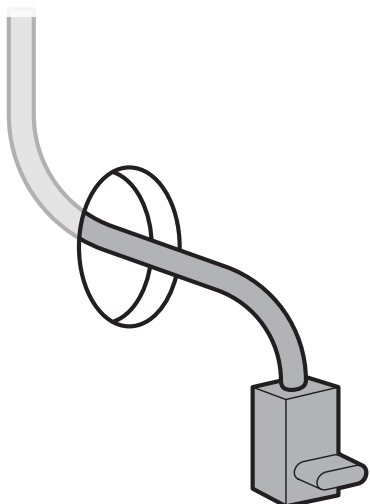
Drill a hole 15 mm to 22 mm (5/8 in to 7/8 in) in diameter.

**NOTE:** Exercise caution for electrical wiring and pipes when drilling.



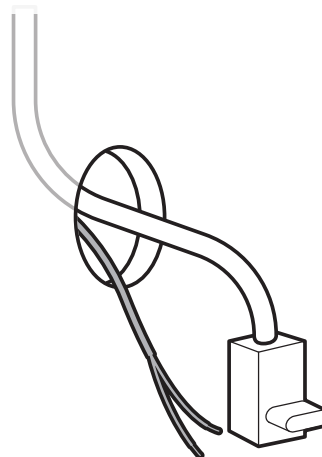
4.

Route the USB-C cable into the wall and through the hole.



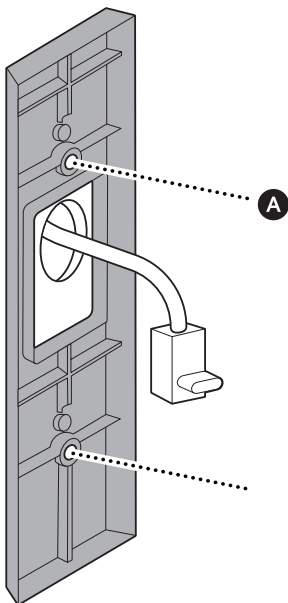
5.

(Optional) If connecting to an in-home chime, route the doorbell wiring through the hole.

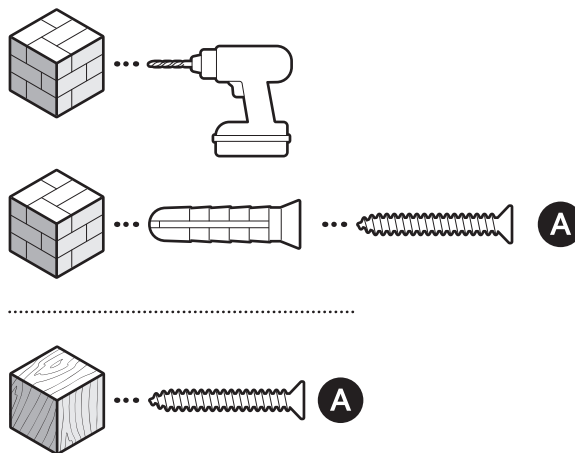


6.

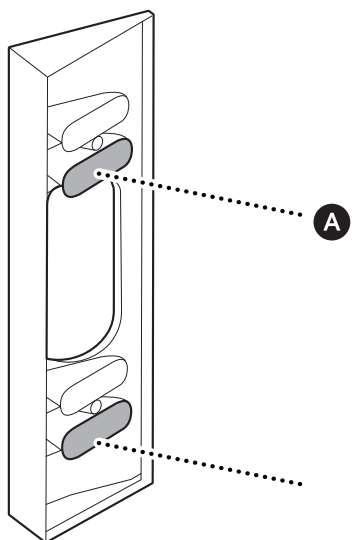
(Optional) If installing your doorbell without a wedge or corner kit, install the spacer over the USB-C cable and wiring with the included screws.



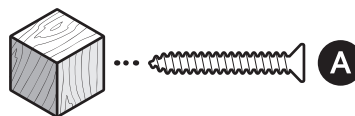
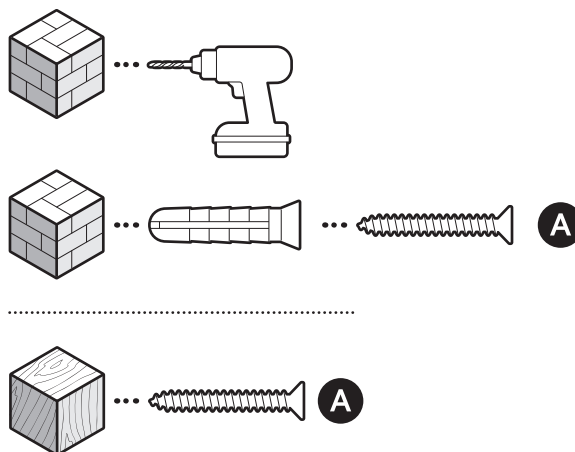
On stucco, brick, or concrete, use a 6 mm (1/4 in) masonry bit to drill holes for the included wall anchors.



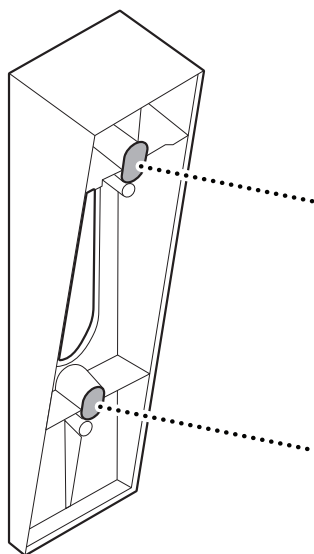
(Optional) If using a corner mount, install the mount over the USB-C cable using the bottom holes in the top and bottom sections, ensuring it is facing in your desired viewing direction.



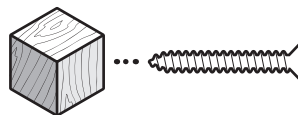
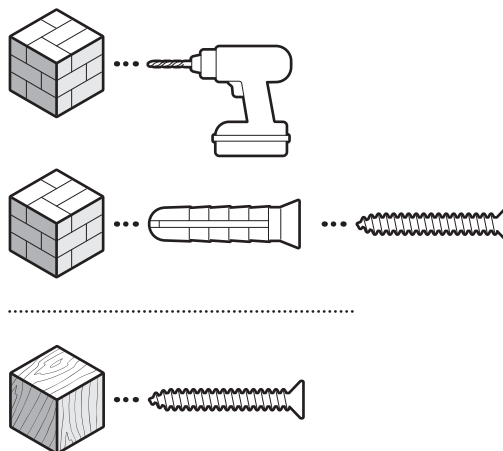
On stucco, brick, or concrete, use a 6 mm (1/4 in) masonry bit to drill holes for the included wall anchors.



(Optional) If using a wedge mount, install the mount over the USB-C cable using the screws included with your wedge kit, ensuring it is facing down.

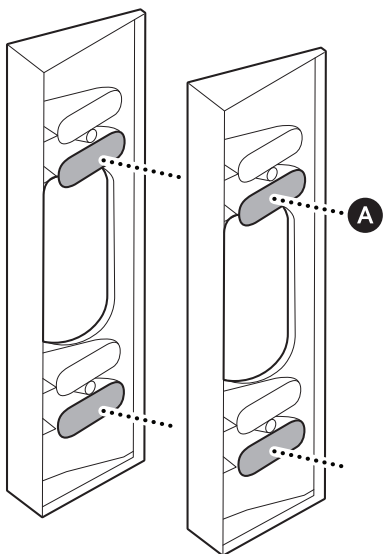


On stucco, brick, or concrete, use a 6 mm (1/4 in) masonry bit to drill holes for the included wall anchors.



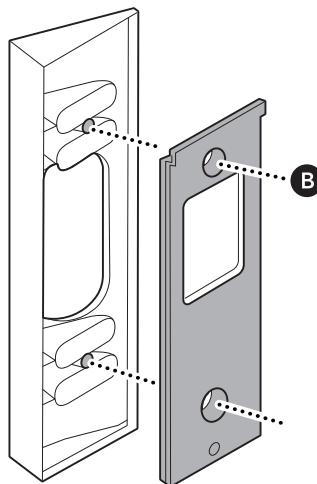
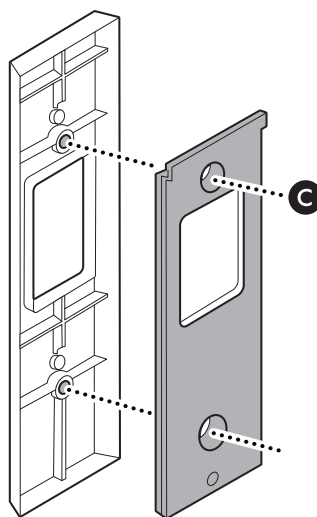
7.

(Optional) If installing multiple wedge or corner mounts, insert screws through both mounts to hold them together.



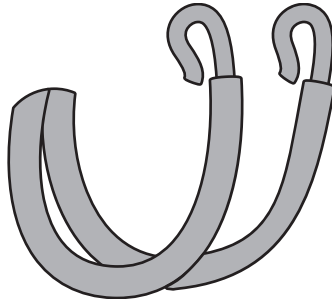
8.

Install the mounting bracket on your mount or directly over the spacer with the included screws.



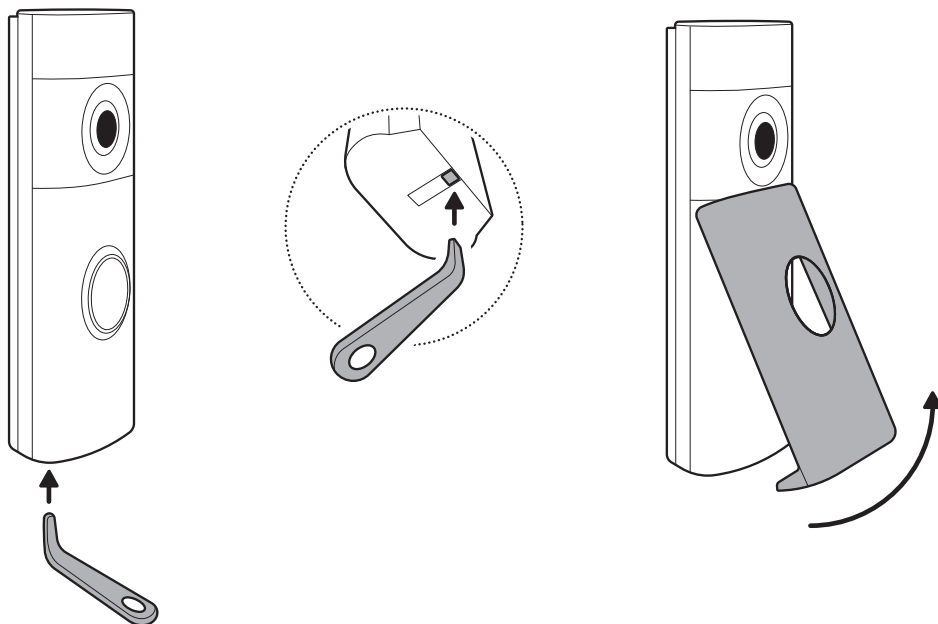
9.

(Optional) If connecting to an in-home chime, prepare the doorbell wiring by creating a U shape in the wire toward the left.



10.

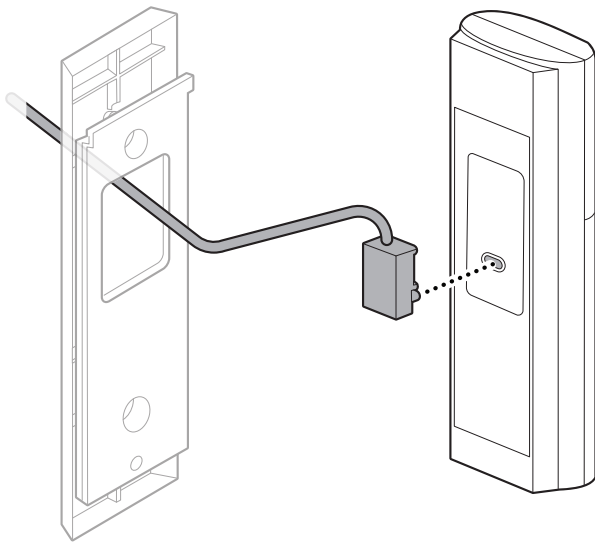
Remove your doorbell's faceplate by inserting the removal tool into the slot at the bottom of your doorbell.



11.

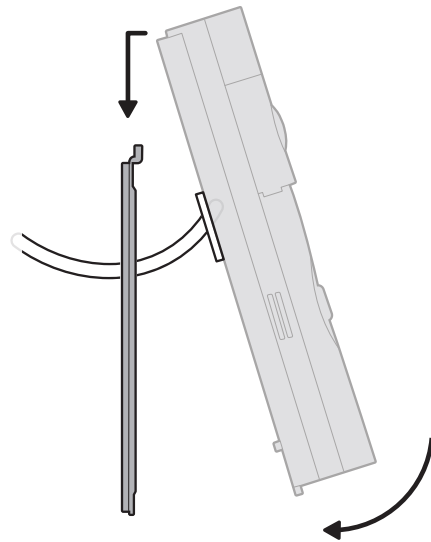
Connect the USB-C cable and doorbell wiring to the back of your doorbell.

**NOTE:** If connecting to an in-home chime, attach the doorbell wiring first.



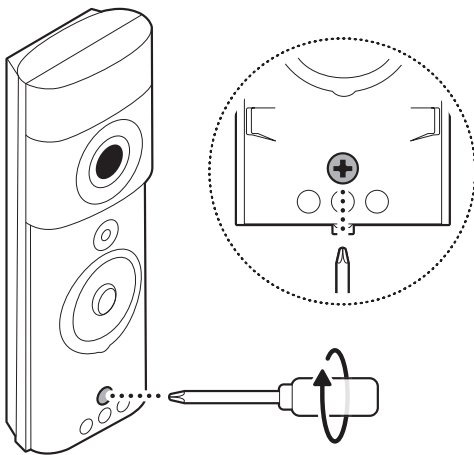
12.

Mount your doorbell by hooking it over the bracket and pushing down.



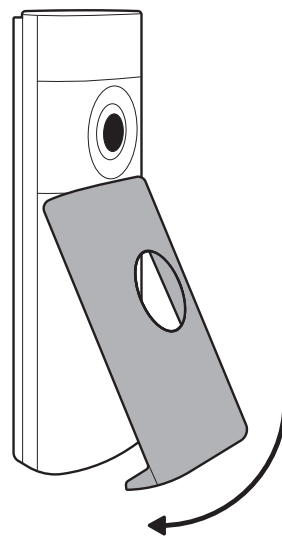
13.

Tighten the security screw.



14.

Reattach the faceplate.





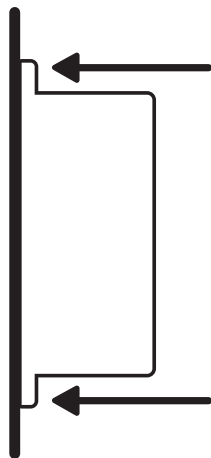
## Adapter installation

### FOR INDOOR USE ONLY

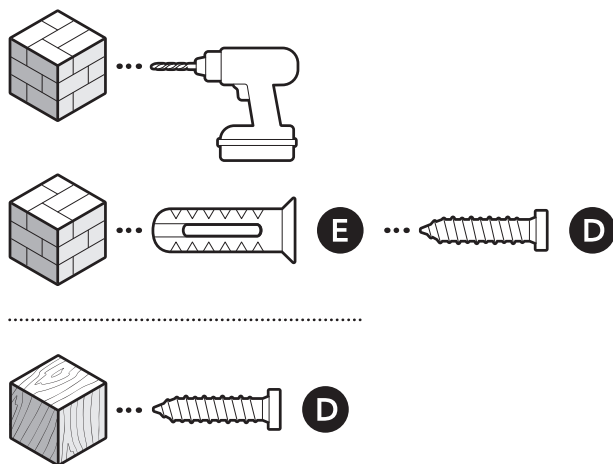
#### 1.

Install the adapter on the wall with the included screws.

**WARNING:** PoE+ Adapter is for indoor use only. Do not install where it may be exposed to water or moisture.

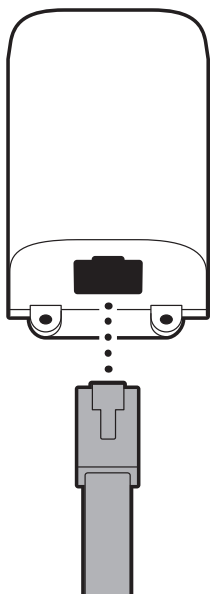


On stucco, brick, or concrete, use a 3/16 in (5 mm) masonry bit to drill holes for the included wall anchors.



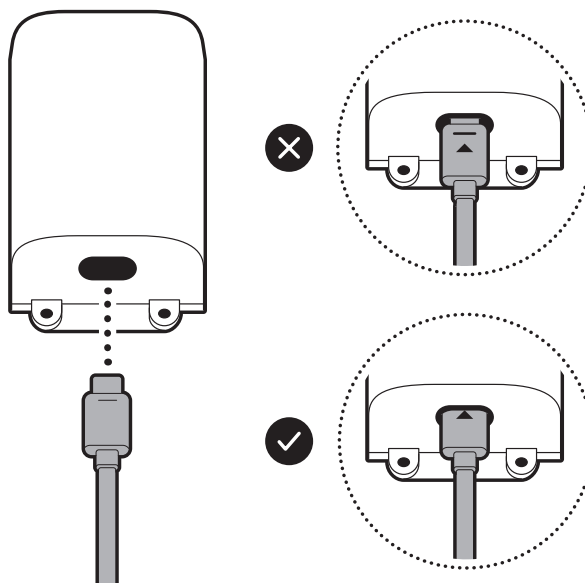
#### 2.

Plug the Ethernet cable into the adapter.



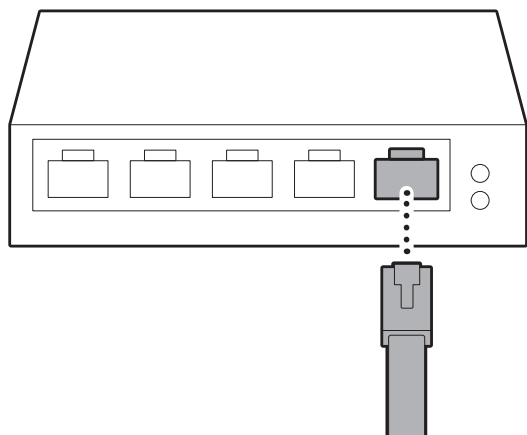
#### 3.

Plug the included USB-C cable into the adapter until the indicator line disappears.



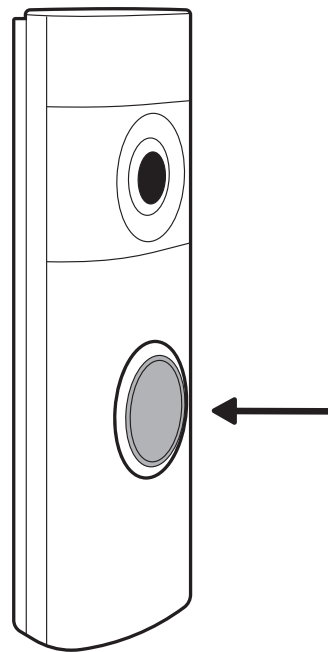
4.

Plug your network cable into your PoE switch.



5.

Ring your doorbell to ensure everything is working properly.



[ring.com/contact](https://ring.com/contact)



[ring.com/help](https://ring.com/help)

Ring LLC 12515 Cerise Ave, Hawthorne, CA, 90250 USA

Ring LLC / Amazon EU S.à.r.l., 38 Avenue John F. Kennedy, L-1855 Luxembourg / Amazon UK, 1 Principal Place, Worship Street, London, EC2A 2FA, United Kingdom

アマゾンジャパン合同会社 〒153-0064 東京都目黒区下目黒1-8-1

Ring LLC ميني 12515 طريق سيريس، هاوثرن، كاليفورنيا، 90250. الولايات المتحدة الأمريكية

©2025 Ring LLC or its affiliates. Ring and all related marks are trademarks of Ring LLC or its affiliates.

©2025 Ring LLC又はその関連会社。Ring及びこれらに関するすべての商標は、Ring LLC又はその関連会社の商標です。

