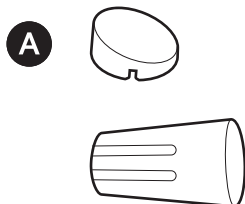


Hardware included

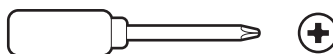


WARNING: Electrical shock hazard. Disconnect power to installation area at your circuit breaker or fuse box before beginning installation. Always use caution when handling electrical wiring. Installation by a qualified electrician may be required in your area. Refer to your local laws and building codes before performing electrical work; permits plus professional installation may be required by law. Your Hardwire Kit must be installed on a 4" round UL listed weatherproof electrical box when installed outdoors.

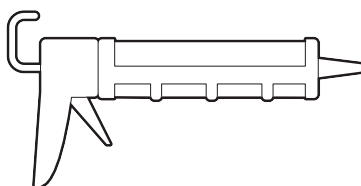
Note: If your power system is classified as OVC III, please check the building "Distribution Panel", Ex switch panel has installed Surge Protectors. Ensure that the surge protector is a UL 1449 certified Surge Protector to reduce Mains Transient Voltage to Overvoltage Category II (2500 V pk or lower) before connecting to all AC Inputs. If there is no Surge Protector, do not install Hardwire Kit without one.

Before you begin installing your Hardwired Kit, make sure that you're following safety code standards.

Tools needed



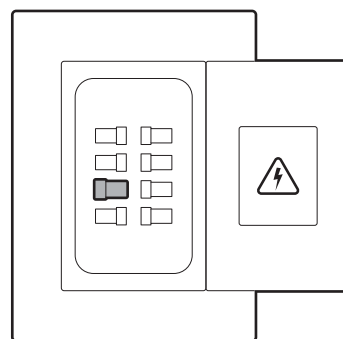
Phillips-head screwdriver



Caulk gun

1.

Shut off power at the breaker.



Junction boxes

For installing out-of-wall, 4-inch metal and plastic junction boxes:

Inspect your junction box before installing your Hardwired Kit. If you notice any signs of water ingress, pooling water, visible condensation, or rusted or corroded metal components, consult a qualified electrician in your area before proceeding with installation.

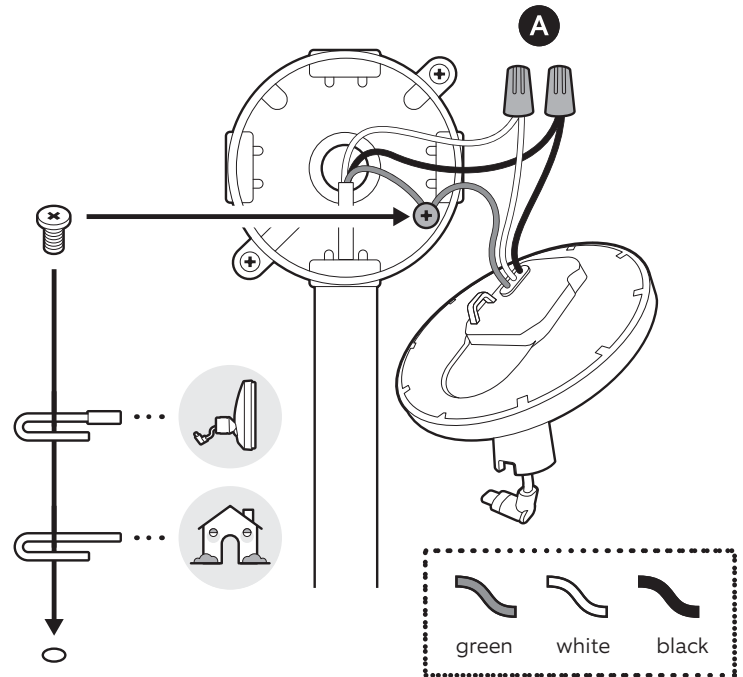
Requires a minimum 14AWG or higher 3-core cable.

Optional: Temporarily install a machine screw to hold the S-hook for help connecting the wires. Remove the temporary screw after wires are connected.

1.

For metal: Connect the green earth wires with junction box earth screw. (Home protective earthing and wired mount bonding conductor wires) See connection diagram. Then, connect the white (N) and black (L) wires with wire nuts.

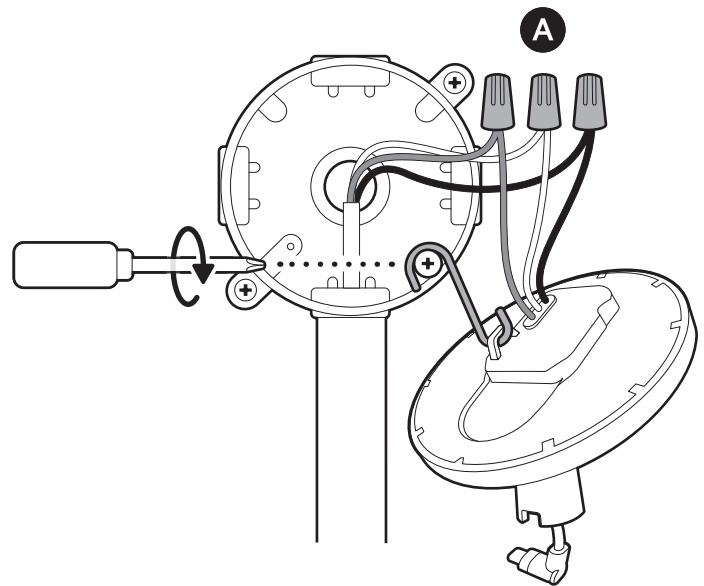
If you can't easily identify the wires coming out of your junction box, or have difficulty with or are uncomfortable connecting them, consult a licensed electrician.



For plastic: Connect the green earth wires with a wire nut. (Home protective earthing and wired mount bonding conductor wires) See connection diagram. Then, connect the white (N) and black (L) wires with wire nuts.

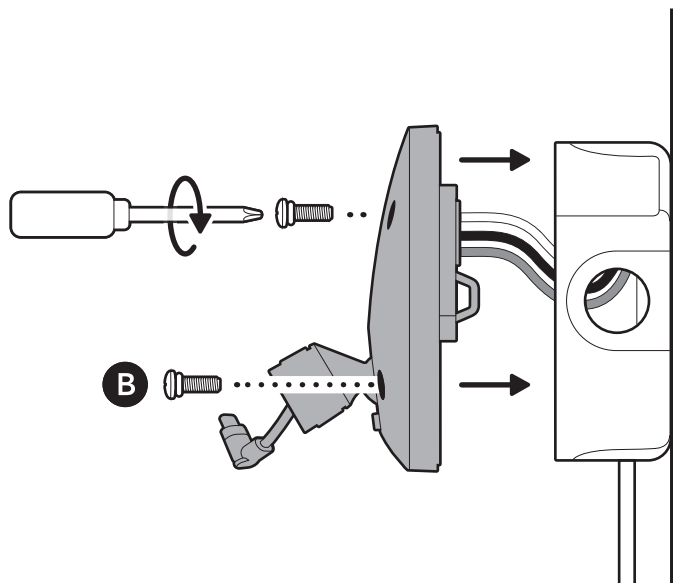
If you can't easily identify the wires coming out of your junction box, or have difficulty with or are uncomfortable connecting them, consult a licensed electrician.

Note: If you ever need to remove wires: Remove the white (N) and black (L) wires. Then, remove the wired mount bonding conductor wire and the home protective earthing conductor wire.



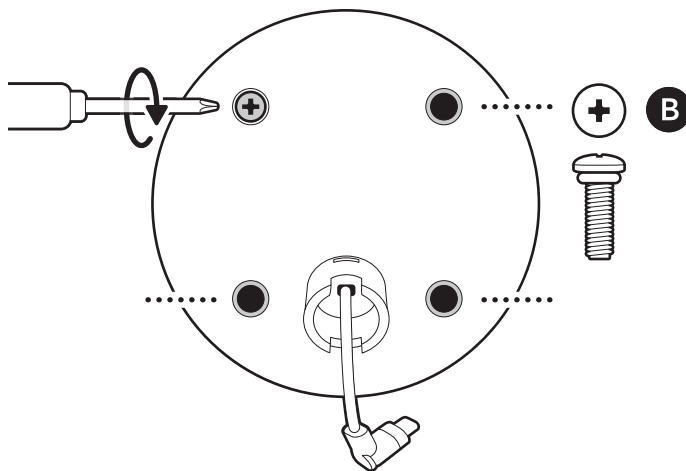
2.

For metal and plastic: Gently put the wires in the junction box and secure the wired mount to the junction box with 4 machine or tapping screws with O-rings.



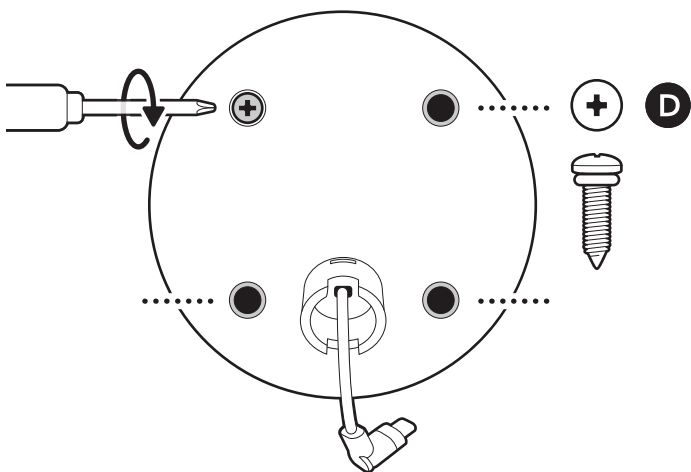
3a.

For metal: Then, tighten the screws into the wired mount until the foam backing fully seals the junction box to prevent water from entering.



3b.

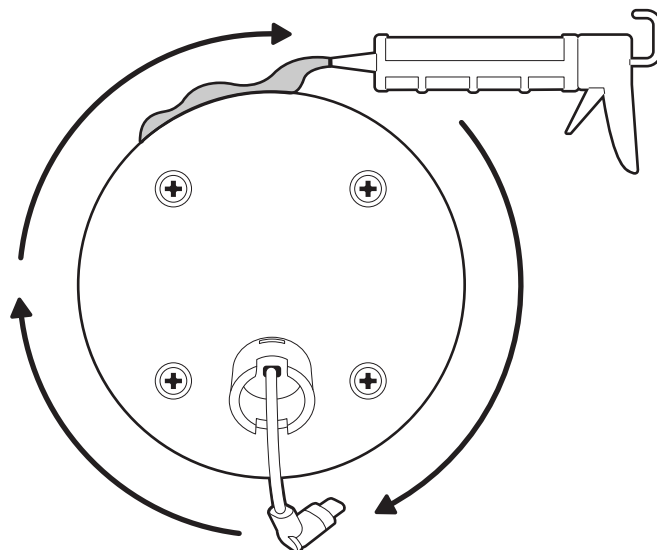
For plastic: Tighten the screws into the wired mount until the foam backing fully seals the junction box to prevent water from entering.



For in-wall and out-of-wall junction boxes:

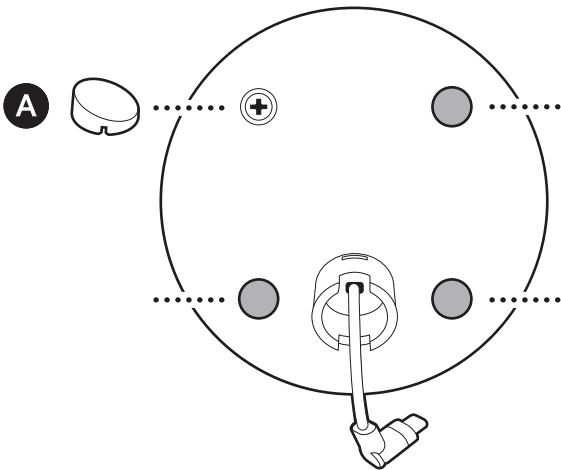
4.

Apply a weatherproof silicone caulk or sealant around the outside where the wired mount and junction box or wall meet to prevent water from entering the junction box.



5.

Apply cosmetic screw plugs.



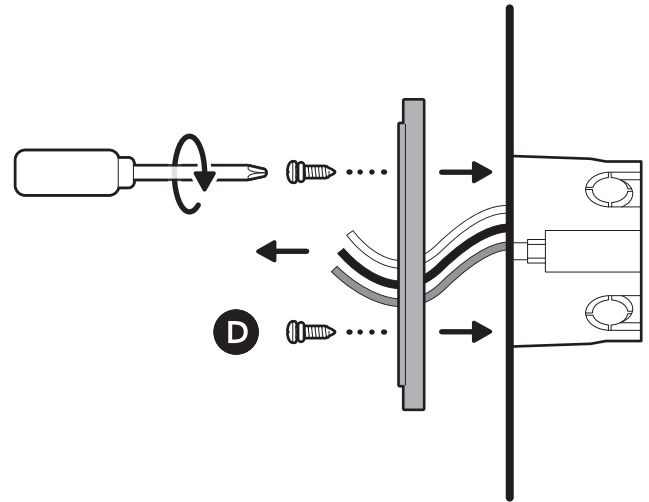
For installing in-wall, 3.5-inch plastic junction box and switch box:

1.

For junction and switch box: Attach the adapter plate to junction box with 2 tapping screws.

Requires a minimum 14AWG or higher 3-core cable.

NOTE: If using a metal junction box, use screw C.



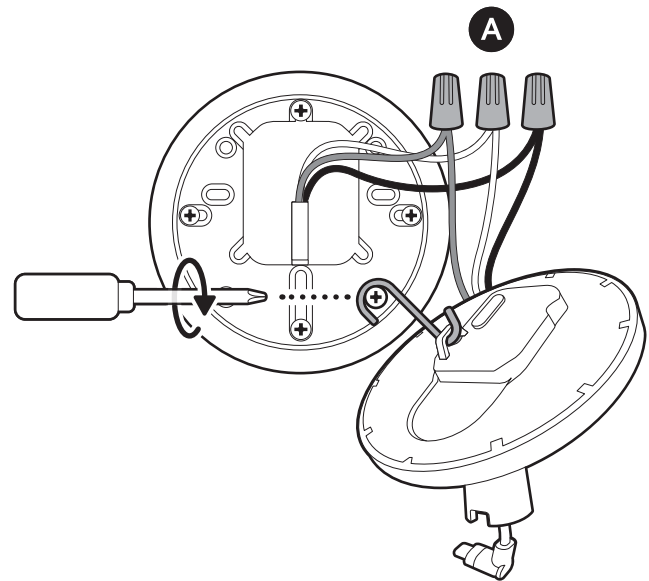
2.

For junction and switch box: Connect the green earth wires with a wire nut. Then, connect the white (N) and black (L) wires with wire nuts.

If you can't easily identify the wires coming out of your junction box, or have difficulty with or are uncomfortable connecting them, consult a licensed electrician.

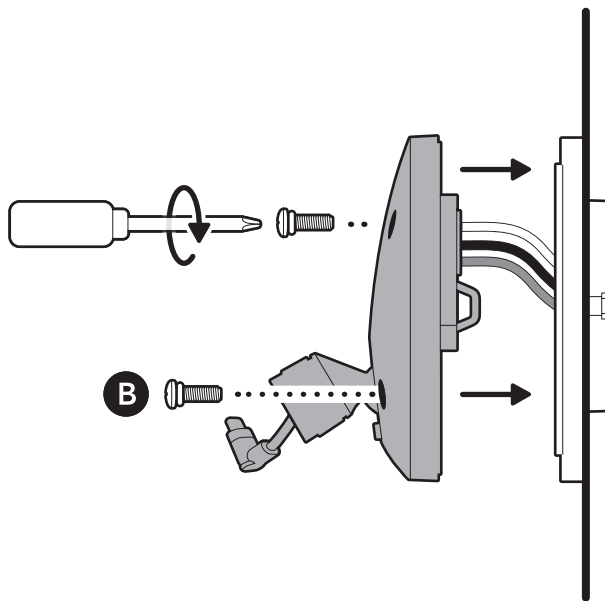
Optional: Temporarily install a machine screw to hold the S-hook for help connecting the wires. Remove the temporary screw after wires are connected.

Note: If you ever need to remove wires: Remove the white (N) and black (L) wires. Then, remove the wired mount bonding conductor wire and the home protective earthing conductor wire.



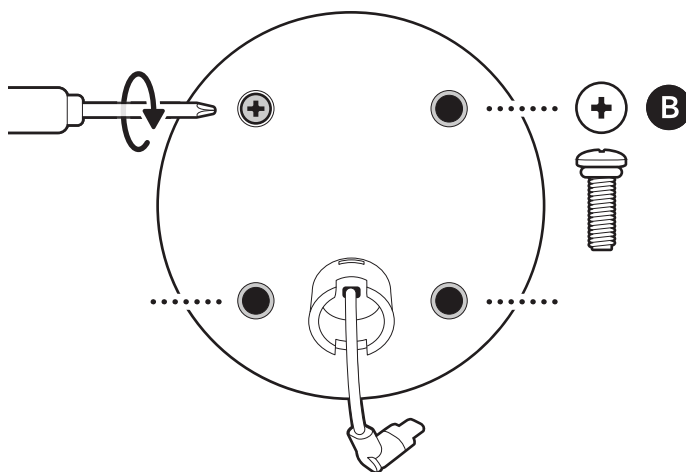
3.

For junction and switch box: Stuff the wires gently into the junction box and screw the wired mount to the adapter plate with 4 machine screws with O-rings.



4.

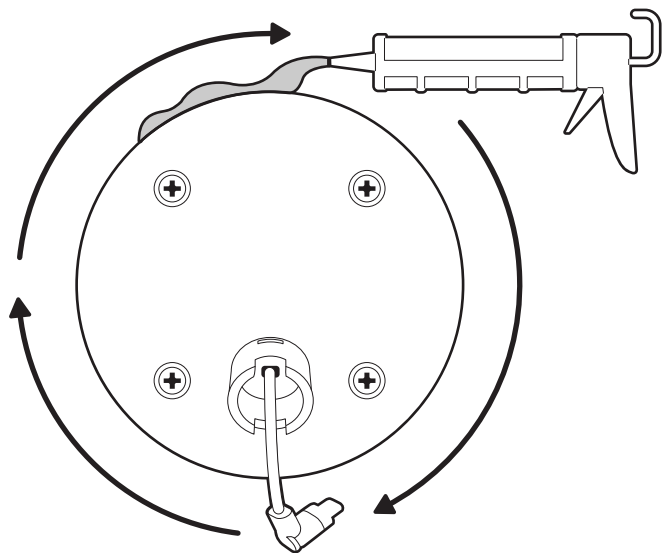
For junction and switch box: Then, tighten the screws into the wired mount until the foam backing fully seals the junction box to prevent water from entering. (1.37-1.47N/m of torque force)



For in-wall and out-of-wall junction boxes:

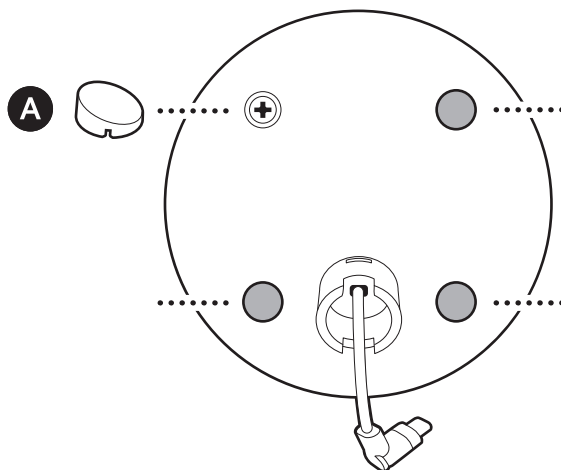
5.

Apply a weatherproof silicone caulk or sealant around the outside where the wired mount and junction box or wall meet to prevent water from entering the junction box.



6.

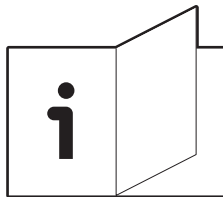
Apply cosmetic screw plugs.



Camera installation

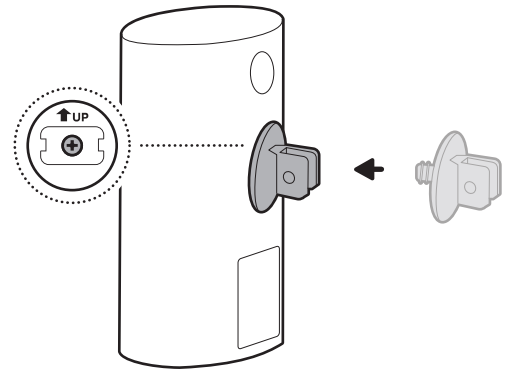
1.

Refer to your camera's setup guide to remove the native mount and rubber cap.



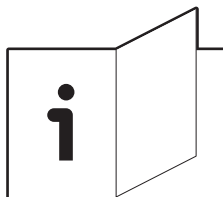
2.

Tighten the included hex joint onto the back of your camera, ensuring the UP arrow is pointing up.



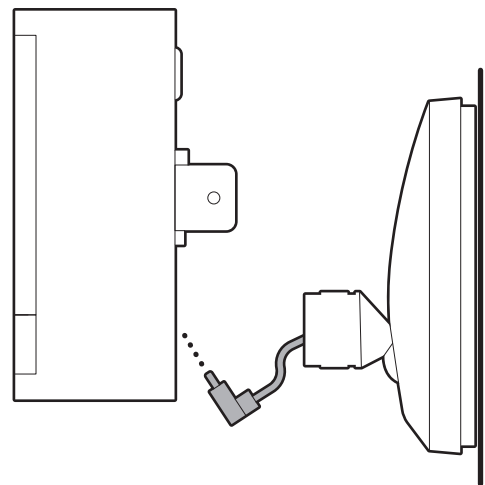
3.

Refer to your camera setup guide to remove the rubber plug from your camera's power port, if necessary.



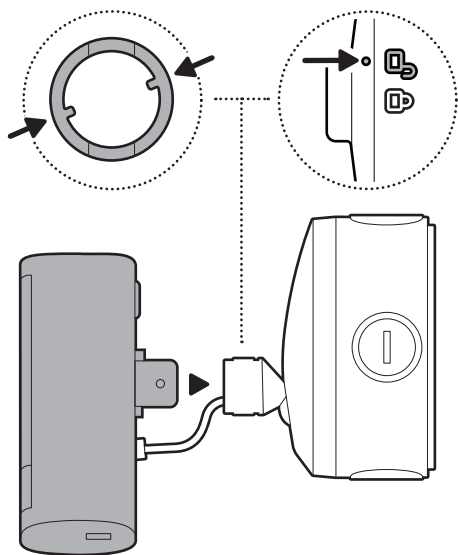
4.

Plug the USB-C cable on the junction box cover mount into your camera, ensuring it is fully inserted.



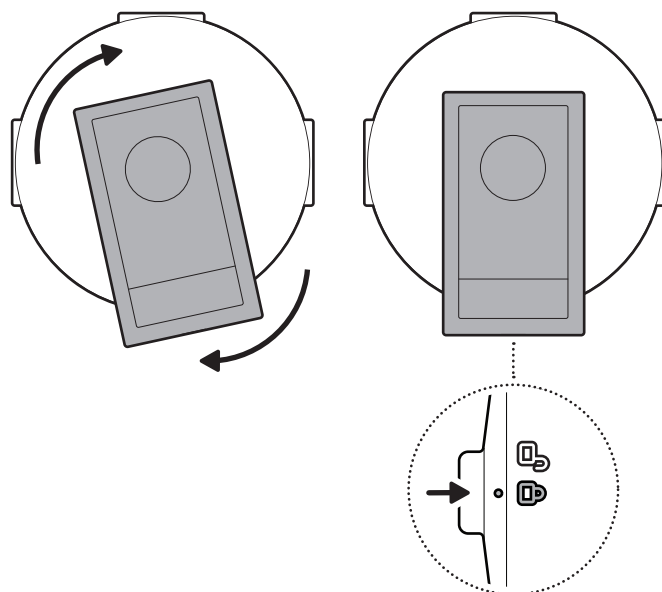
5.

Align the locking indicators on the hex joint and the junction box cover mount and insert.



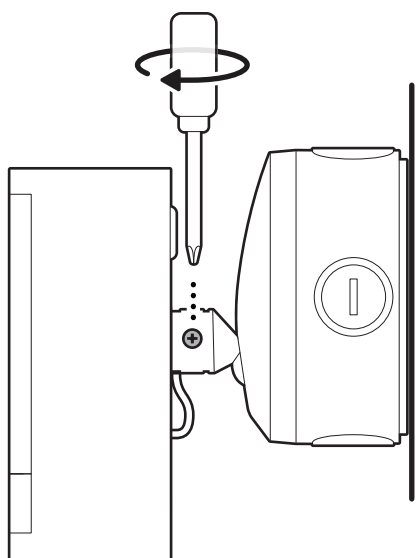
6.

Turn until your camera locks in place.



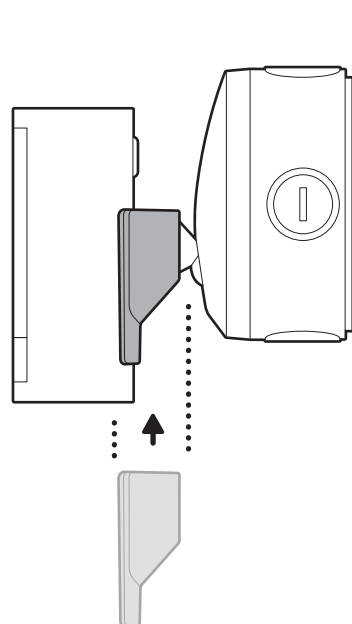
7.

Tighten the security screw.



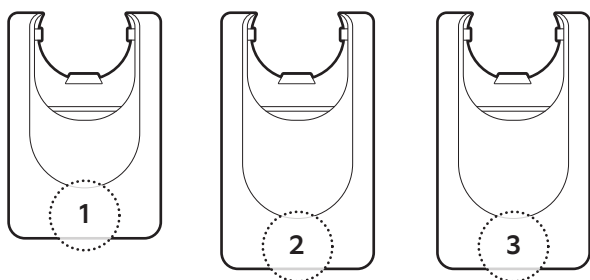
8.

Install your camera's decorative cover by sliding until you hear a click to secure.



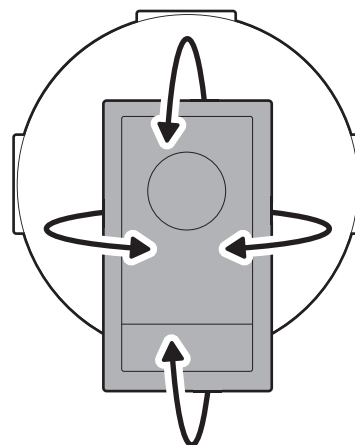
9.

If installing Outdoor Cam Plus, use decorative cover 1.
 If installing Outdoor Cam Pro, use decorative cover 2.
 If installing Spotlight Cam Pro (2nd Gen), use decorative cover 3.



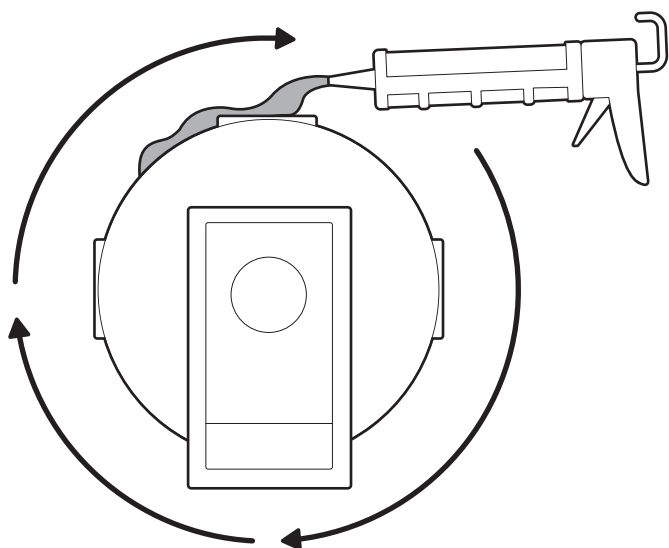
10.

Adjust your camera's position, if necessary.



11.

Must apply proper silicone or caulk around the junction box knockouts, between the junction box and junction box cover mount, and between the junction box and mounting surface to seal any gaps.



ring.com/contact



ring.com/help

Ring LLC 12515 Cerise Ave, Hawthorne, CA, 90250 USA

Ring LLC / Amazon EU S.à.r.l., 38 Avenue John F. Kennedy, L-1855 Luxembourg / Amazon UK, 1 Principal Place, Worship Street, London, EC2A 2FA, United Kingdom

アマゾンジャパン合同会社 〒153-0064 東京都目黒区下目黒1-8-1

شركة Ring LLC طريق سيريس مينوي 12515 مدينة هاثورن، كاليفورنيا، 90250، الولايات المتحدة الأمريكية.
 ©2025 Ring LLC or its affiliates. Ring and all related marks are trademarks of Ring LLC or its affiliates.

©2025 Ring LLC又はその関連会社。Ring及びこれらに関するすべての商標は、Ring LLC又はその関連会社の商標です。

