



ring

Pro Power Kit

For Ring Video Doorbell Pro





Pro Power Kit

The Pro Power Kit is a multi-function tool that is an essential part of installing your Ring Video Doorbell Pro.

In most cases, Pro Power Kit is used to regulate the power from your doorbell system, ensuring that your Ring Pro gets the power it needs.

You can also use it to safely disable your internal doorbell, if advised to do so by Ring Community Support.

What's in This Kit?



Pro Power Kit

Installs inside your internal doorbell to ensure the proper function of your Ring Video Doorbell Pro.



Wire Harnesses

Choose the type that fits your internal doorbell, and plug it into Pro Power Kit. The harness with U-shaped connectors works best in most cases.



If you plan to disable your internal doorbell, do not attach a wire harness to your Pro Power Kit.

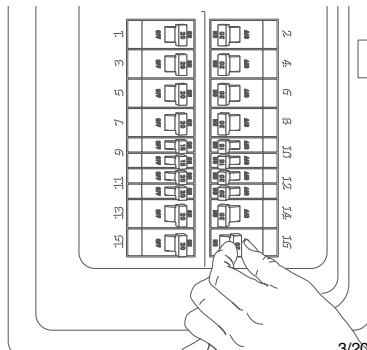


Contents

1. Prepare to Install
2. Disable your Internal Doorbell
(For Troubleshooting)
3. Install Pro Power Kit
(For Standard Use)
4. Final Steps

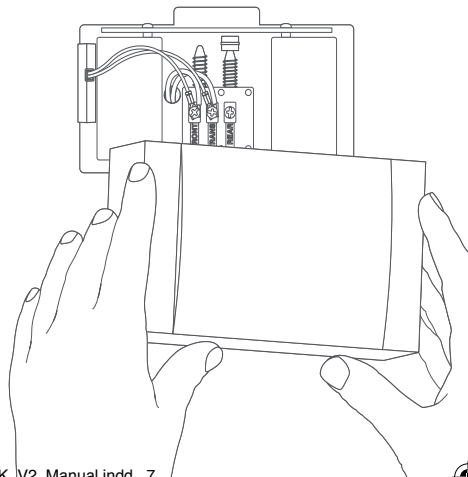
Turn off the Circuit Breaker for your Internal Doorbell

You'll be working with electrical wires during the install process. For safety's sake, shut off power to your doorbell at the circuit breaker.



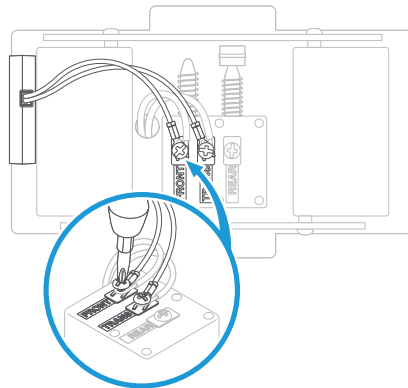
1. Prepare to Install

Remove the Cover from your Internal Doorbell



Loosen the “Front” and “Transformer” Screws

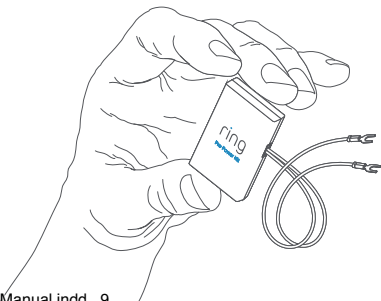
The Ring screwdriver is perfect for this job.



Remove the Existing Pro Power Kit

If you already have a Pro Power Kit installed in your doorbell, it's time to remove it.

Detach the existing Pro Power Kit wires from the "Front" and "Transformer" screws, then remove the Pro Power Kit.



Choose Your Install Type

If you have experienced problems with your Ring Pro, you may have been advised to disable your internal doorbell by Ring Community Support.

For this type of install, see **Section 2 - Disable your Internal Doorbell.**

If you want to install Pro Power Kit as normally advised for Ring Pro, see **Section 3 - Install Pro Power Kit.**

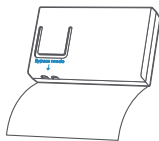
Disabling your Internal Doorbell with Pro Power Kit



These instructions are for troubleshooting use only. If you don't need to disable your internal doorbell, skip to the next section.

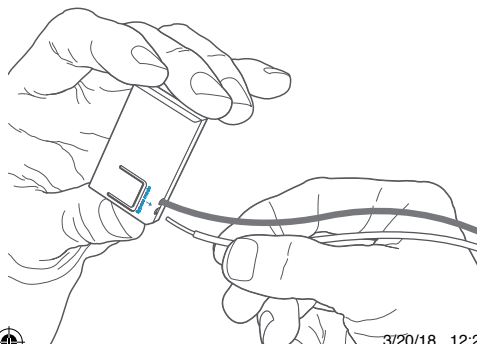
If you need to disable your internal doorbell to solve a power problem, follow these instructions:

First, remove the label from the Pro Power Kit.



Next, detach the doorbell wires from the “Front” and “Trans” terminals on your internal doorbell, and straighten the ends.

Then, firmly insert the wires into the Bypass Mode holes on Pro Power Kit. It doesn't matter which wire goes to each hole.



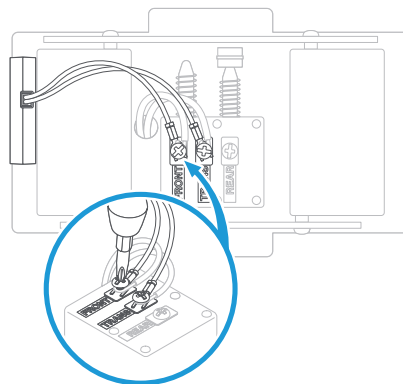
Install the New Pro Power Kit



These instructions are for standard use only. If you need to disable your internal doorbell, go back to the previous section.

Slide the wires from the new Pro Power Kit under the “Front” and “Transformer” screws, taking care not to detach the existing doorbell wires.

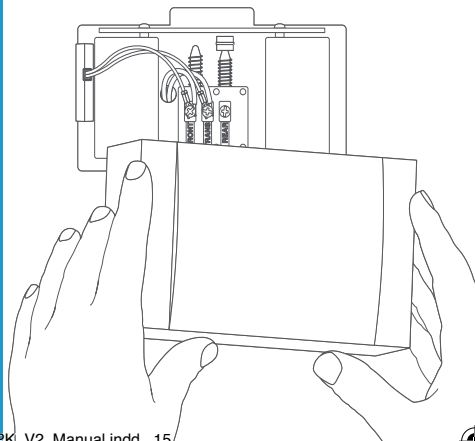
Then, re-tighten the screws.



It doesn't matter which Pro Power Kit wire goes to each doorbell terminal, as long as both are connected.

Replace the Cover on your Internal Doorbell

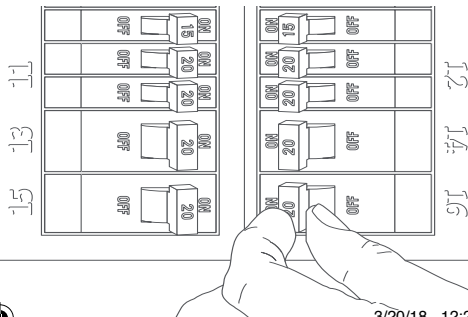
Secure your new Pro Power Kit inside your doorbell and replace the cover.



Restore Power at the Breaker

After doing so, the light on the front of your Ring Doorbell Pro should illuminate.

If it doesn't check the connections on your Pro Power Kit.



Set Doorbell Type

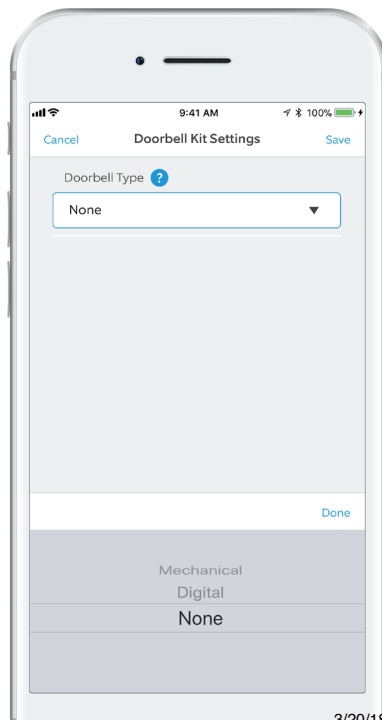
Note: Do not skip this step, or your Ring Doorbell may be damaged.

In the Ring app, select your Ring Doorbell Pro, then tap the gear-shaped icon and select **Doorbell Kit Settings**.

If you disabled your internal doorbell, choose **None**.

If you installed Pro Power Kit for normal use, choose the type that matches your internal doorbell.

Finally, tap Save.



Press the Button

Press the button on the front of your Ring Doorbell.

If it sounds a chime and you get a notification in the Ring app, that's a great sign!

Check the Voltage

Back in the Ring app, go back to the main settings screen for your Ring Doorbell and tap Device Health.

Check the Voltage reading. If it shows as "Good" or "Very Good," you're all set! If not, come back in an hour, press the button on your Ring Pro, and check Voltage again.

If your Voltage reading never reaches "Good," please check that your doorbell transformer supplies at least 16 volts at ~30 VA, and step through these instructions again to ensure that no steps were missed.



Want a New Doorbell Chime?

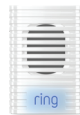
If you disable your internal doorbell, it can no longer ring.

You can still receive Ring and Motion Alerts with your mobile device, but if you prefer to have a dedicated doorbell chime, consider adding a Ring Chime or Chime Pro.

For more information, visit:

ring.com/chime

ring.com/chime-pro



Ring Chime

Wi-Fi-enabled indoor chime that replaces your internal doorbell, making Ring alert sounds audible throughout your home.



Ring Chime Pro

Wi-Fi-enabled indoor chime that replaces your internal doorbell and extends your Wi-Fi network, improving coverage for your Ring devices.

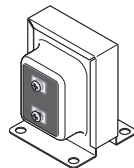


Still Having Problems?

If you still experience problems after installing your new Pro Power Kit, your issue may be caused by an underpowered doorbell transformer.

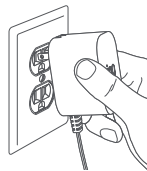
To upgrade to a recommended doorbell transformer or plug-in adapter, visit:

ring.com/accessories.



Ring Hardwired Transformer

Replaces your existing doorbell transformer. Supplies 16 VAC at 30 VA, as recommended for Ring Pro.



Ring Plug-in Adapter

Powers your Ring Pro from a standard power outlet, up to 20 feet away.



For additional help, visit:
ring.com/help

Or give us a call...

[US 1 800 656 1918](tel:18006561918)

[Canada 1 855 300 7289](tel:18553007289)

[Worldwide +1 310 929 7085](tel:13109297085)



For a list of all our customer
support numbers, visit:
ring.com/callus

