



## Quick Start

**1. Open the Ring app and select Set Up a Device.**  
Then follow the in-app instructions.

**2. Scan this code.**  
This identifies your Ring device to make setup fast and easy.



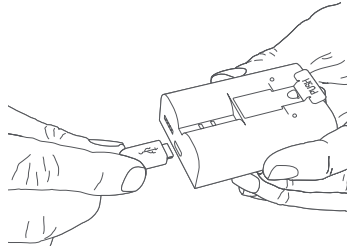
2

### Plug it in.

First, **fully charge** the battery by plugging it into a power source using the provided USB cable.

The small light on top will glow green once **fully charged**.

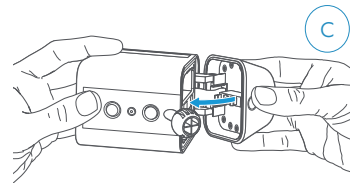
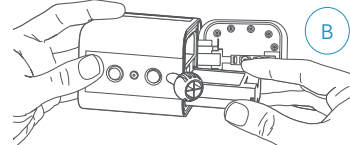
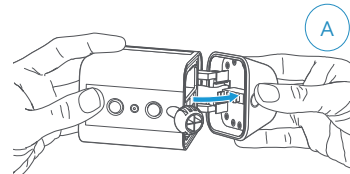
 = Charging  = Charged



3

### Insert the battery.

After charging, insert the battery in your Spotlight Cam until it clicks into place. Then, click the door closed.



4

### Download the Ring app.

The Ring app walks you through setting up and managing your Spotlight Cam.

Search for "Ring" in one of the app stores below, or visit [ring.com/app](https://ring.com/app)



**Set up your Spotlight Cam in the Ring app.**

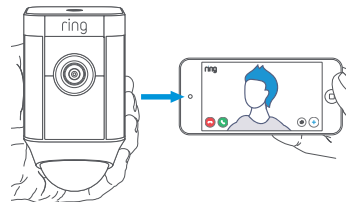
**Set up your Spotlight Cam near your router.**

In the Ring app, select **Set Up a Device**.

When prompted, select **Security Cams** and follow the in-app instructions.

**Try it out!**

After setup, tap the Live View button in the Ring app to see live video from your Spotlight Cam.



5

### White light flashing?

If the light on the bottom of your Spotlight Cam is flashing after setup, it's updating its software.

Do not remove the battery from your Spotlight Cam while the light is flashing!

**Test video quality outside.**

Now, take your Spotlight Cam outside, near the place where you want to install it. Test video quality again.

**Everything look good?** Continue to the next section.

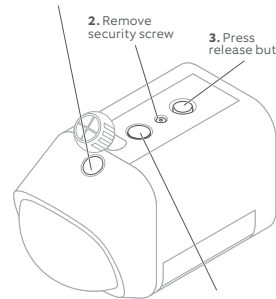
**Something not right?** Jump ahead to the troubleshooting section.

**How to remove the mounting plate:**

1. Press button to open battery compartment

2. Remove security screw

3. Press release button



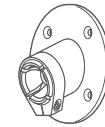
4. Remove weather seal, and insert in unused hole

6

### Included installation hardware.



**Screwdriver**  
Use to secure the star-shaped security screw on the mounting plate.



**Mounting Bracket**  
Attach this to the wall first, then slot Spotlight Cam into the socket.



**Install Screws**  
Use these to secure the mounting bracket to your wall.

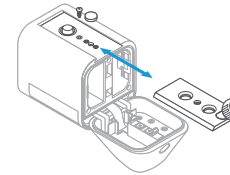
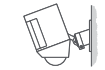


**Wall Anchors**  
Use these to attach the mounting bracket to your wall if installing on a hard surface, such as stucco or brick.

7

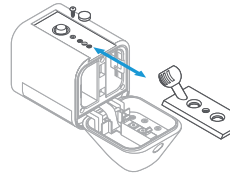
### If installing on a wall:

Before installing Spotlight Cam on a wall, insert the mounting plate with the ball socket pointing down.



**If installing on an eave:**

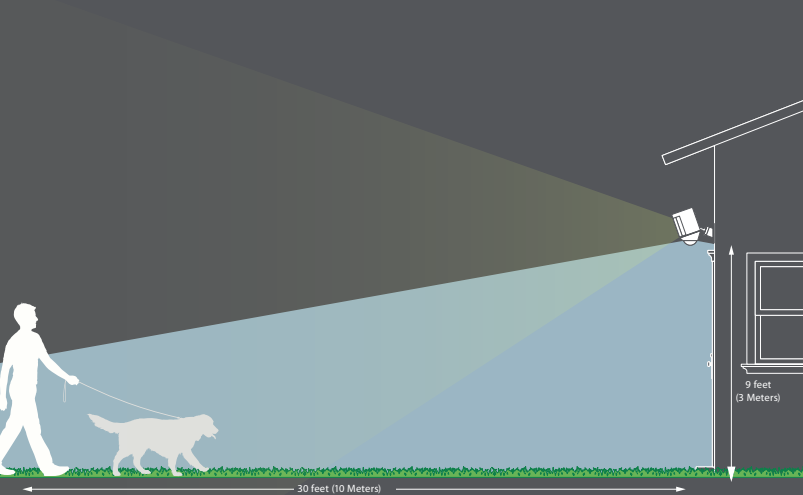
Before installing Spotlight Cam on an eave or overhang, insert the mounting plate with the ball socket pointing up.



8

### Choose your install height.

When mounted at 9 feet off the ground, with the motion detector parallel to the ground, the motion sensor is optimized to detect human-sized objects at up to 30 feet.

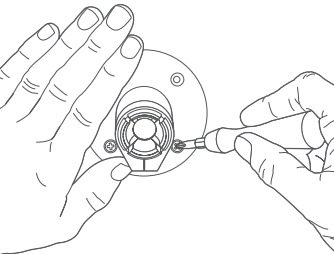


**Install the mounting bracket.**

First, mark your holes using the mounting bracket as a guide.

If installing on a masonry surface, first drill holes using a 1/4" drill bit.

If installing on a wood surface, you can screw the bracket directly into your wall.



**If you have a Ring Solar Panel...**

Ring Solar Panel charges your Spotlight Cam continuously—no need to charge or swap out batteries.

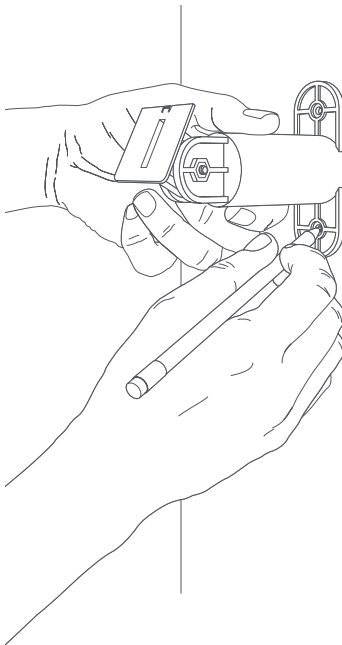
If you don't yet have a Ring Solar Panel, skip to page 17.

For more info, visit [ring.com](https://ring.com)

**Mark the holes.**

Select an install location where Solar Panel can get at least 1 hour of direct sunlight a day.

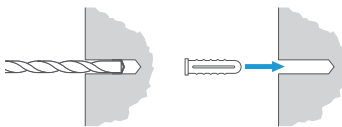
Mark the holes using the mounting arm as a template.



**Install wall anchors. (optional)**

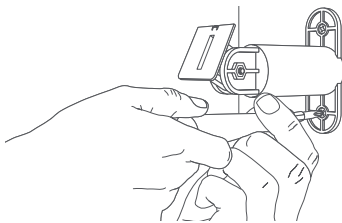
If installing on a hard surface (such as stucco or brick), use a 1/4" drill bit to predrill the mounting holes, then insert the wall anchors.

If installing on wood or siding, skip this step.



**Screw in the mounting arm.**

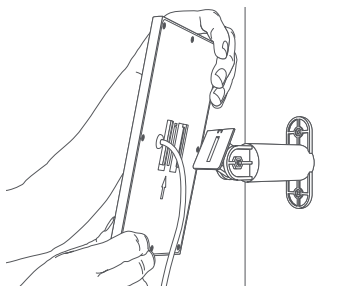
Drive the included mounting screws into your wall (or the wall anchors, if installing on a hard surface) until the mounting arm is secure.



**i** It's easier to screw in the mounting arm before you attach the solar panel.

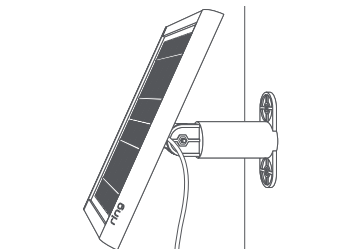
**Attach the Solar Panel.**

Slot the Solar Panel onto the mounting arm, and make sure it's secure.



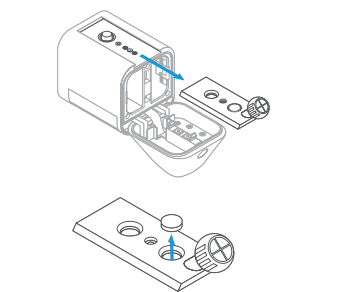
**Adjust the panel angle.**

Loosen the screw on the mounting arm and adjust the panel to your desired angle, then re-tighten the screw to secure your setting.



**Remove the seal.**

Remove the weatherproofing seal on the rear of your Spotlight Cam. Then, slot the mounting plate back into place.



**Plug in your Solar Panel.**

If your Solar Panel plug looks like example 1, simply insert it into the power port on the rear of your Spotlight Cam.

Press the plug in firmly, until you feel it click into place. You're all set!

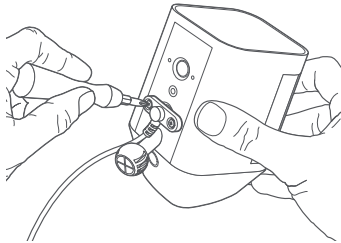
If your Solar Panel plug looks like example 2, skip to the next page.



**If your plug has screw tabs...**

Insert the plug into the power port on the rear of your Spotlight Cam. Secure the plug with the included short screws.

**! DO NOT USE any screw other than the included screws to secure the plug!**

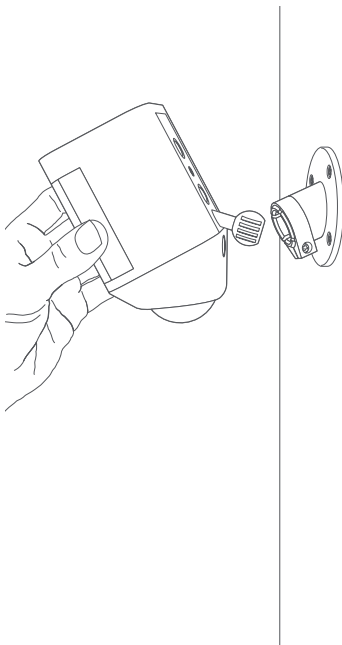


**i** Be sure to charge and insert the included battery. Ring Solar Panel charges the battery, but does not replace it.

**Attach Spotlight Cam to the mounting bracket.**

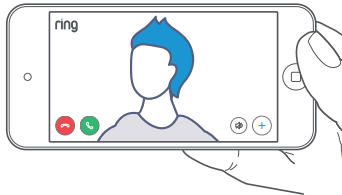
First, fully loosen the metal collar on the bracket.

Then, push the ball into the socket until it snaps into place.

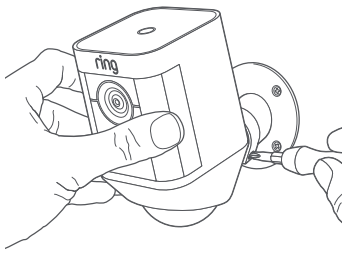


**Adjust the camera angle.**

To ensure accurate motion detection, position the camera with the motion detector parallel to the ground.



Then, tighten the screw on the metal collar to secure the camera position.



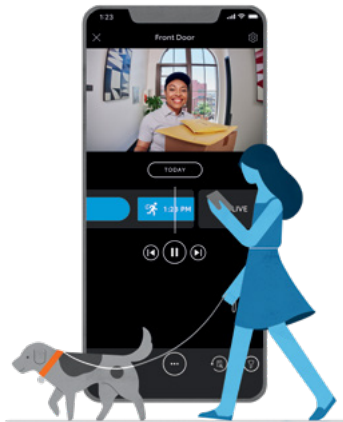
**Review, share, and download.**

Your new device comes with a free 30-day trial of our **Ring Protect** video recording service.

To continue your subscription and save your videos, please visit [ring.com/protect-plans](https://ring.com/protect-plans)

**What is Ring Protect?**

Ring Protect is a subscription service that stores videos from your Ring devices.



**Why do I want it?**

Ring lets you interact with visitors and monitor your property in real time, while Ring Protect allows you to review and share those videos anytime.

**How much does it cost?**

Ring Protect starts at \$3.99 USD/month or \$39.99 USD/year per Ring doorbell or camera.\*

**How do I sign up?**

Simply log into your Ring account at [ring.com/protect-plans](https://ring.com/protect-plans), and follow the on-screen instructions.

\*\$5.99 CAD per month or \$59.99 CAD per year



## IMPORTANT PRODUCT INFORMATION

### Safety and Compliance Information

**Use Responsibly.** Read all instructions and safety information before use.

### SAFETY INFORMATION

FAILURE TO FOLLOW THESE SAFETY INSTRUCTIONS COULD RESULT IN FIRE, ELECTRIC SHOCK, OR OTHER INJURY OR DAMAGE

**WARNING:** Small parts contained in your device and its accessories may present a choking hazard to small children.

**HANDLE WITH CARE.** Your device can optionally use a rechargeable lithium-ion battery. Do not disassemble, open, crush, bend, deform, puncture, or shred the battery in your device. Do not modify or remanufacture the battery, attempt to insert foreign objects into the battery, or immerse or expose it to water or other liquids, expose to fire, explosion or other hazard. Only use the battery for the system for which it is specified. Use of an unqualified battery or charger may present a risk of fire, explosion, leakage, or other hazard. Do not short circuit a battery or allow metallic conductive objects to come into contact with battery terminals. Avoid dropping the device or battery. If the device or battery is dropped, especially on a hard surface, and the user suspects damage, do not attempt repair. Contact Ring Customer Service for assistance.

Do not expose your device or adapter to liquids. If your device or adapter gets wet, carefully unplug all cables without getting your hands wet and wait for the device and adapter to dry completely before plugging them in again.

Do not attempt to dry your device or adapter with an external heat source, such as a microwave oven or a hair dryer. If the device or adapter appear damaged, discontinue use immediately. Use only accessories supplied with the device to power your device. To avoid risk of electric shock, do not touch your device or any wires connected to your device during a lightning storm.

Your device can withstand outdoor use and contact with water under certain conditions. However, your device is not intended for underwater use and may experience temporary effects from exposure to water. Do not intentionally immerse your device in water or expose it to liquids. Do not spill any food, oil, lotion, or other abrasive substances on your device. Do not expose your device to pressurized water, high velocity water, or extremely humid conditions (such as a steam room). To protect against electric shock, do not place cord, plug, or device in water or other liquids.

### PRODUCT SPECIFICATIONS

**Product Name:** Spotlight Cam Battery

**Model Number:** 5AT358

**Electrical Rating:** Removable, rechargeable Quick-Release Battery (3.65Vdc, 6040mAh)

**Operating Temperature:** 5°F to 122°F (-20°C to 50°C)

### RECYCLING YOUR DEVICE PROPERLY

In some areas, the disposal of certain electronic devices is regulated. Make sure you dispose of, or recycle, your device in accordance with your local laws and regulations. For information about recycling your device, go to [amazon.com/devicesupport](https://amazon.com/devicesupport).

### TERMS OF SERVICE AND WARRANTY

Use of the product is subject to your registration with Ring and your agreement with the Terms of Service found at [ring.com/terms](https://ring.com/terms). To review your warranty coverage, please refer to the enclosure inside this box or visit [ring.com/warranty](https://ring.com/warranty).

### FOR USERS IN THE UNITED STATES

#### FCC Compliance Statement

This device complies with part 15 of the FCC Rules. Operation is subject to the following two conditions: (1) This device may not cause harmful interference, and (2) This device must accept any interference received, including interference that may cause undesired operation.

**NOTE:** This equipment has been tested and found to comply with the limits for a Class B digital device, pursuant to part 15 of the FCC Rules. These limits are designed to provide reasonable protection against harmful interference in a residential installation. This equipment generates, uses, and can radiate radio frequency energy and, if not installed and used in accordance with the instructions, may cause harmful interference to radio communications

However, there is no guarantee that interference will not occur in a particular installation. If this equipment does cause harmful interference to radio or television reception, which can be determined by turning the equipment off and on, the user is encouraged to try to correct the interference by one or more of the following measures:

Reorient or relocate the receiving antenna. Increase the separation between the equipment and receiver. Connect the equipment into an outlet on a circuit different from that to which the receiver is connected. Consult the dealer or an experienced radio/TV technician for help.

Pursuant to Section 15.21 of the FCC rules, changes or modifications to a Product by the user that are not expressly approved by the party responsible for compliance could void the user's authority to operate the equipment. The device meets the FCC Radio Frequency Emission Guidelines. Information on the product is on file with the FCC and can be found by inputting such Product's FCC ID (which can be found on the device) into the FCC ID Search form available at [fcc.gov/oet/ea/fccid](https://fcc.gov/oet/ea/fccid).

The party responsible for FCC compliance is Ring LLC, 1523 26th Street Santa Monica, CA 90404.

#### FCC Radiation Exposure Statement

This device complies with FCC radiation exposure limits set forth for an uncontrolled environment and it also complies with Part 15 of the FCC RF Rules.

This equipment must be installed and operated in accordance with provided instructions and the antenna(s) used for this transmitter must be installed to provide a separation distance of at least 20 cm from all persons and must not be co-located or operating in conjunction with any other antenna or transmitter.

### FOR USERS IN CANADA

#### Innovation, Science and Economic Development

#### Canada (ISED) Compliance

This device contains license-exempt transmitter(s)/receiver(s) that comply with Innovation, Science and Economic Development Canada's license-exempt RSS(s). Operation is subject to the following two conditions: (1) This device may not cause interference; and (2) This device must accept any interference, including interference that may cause undesired operation of the device.

#### Information Regarding Exposure to Radio Frequency Energy

This equipment complies with IC RSS-102 RF exposure limits set forth for an uncontrolled environment.

This equipment should be installed and operated with a minimum distance of 20 cm between the radiator and your body.

#### Conformité Innovation Sciences et

#### Développement Économique Canada (ISDE)

L'émetteur/récepteur exempt de licence contenu dans le présent appareil est conforme aux CNR d'Innovation, Sciences et Développement économique Canada applicables aux appareils radio exempts de licence. L'exploitation est autorisée aux deux conditions suivantes : (1) l'appareil ne doit pas produire de brouillage ; et (2) l'appareil doit accepter tout brouillage radioélectrique subi, même si le brouillage est susceptible d'en compromettre le fonctionnement.

#### Informations concernant l'exposition aux radiofréquences

Renseignements relatifs à l'exposition à l'énergie des radiofréquences.

Cet équipement est conforme aux limites d'exposition IC CNR-102 prévues pour environnements non contrôlés. Cet équipement doit être installé et utilisé avec un minimum de 20 cm de distance entre la source de rayonnement et votre corps.

CAN ICES-3 (B)/NMB-3(B)



For additional help, visit [ring.com/help](https://ring.com/help)

Or give us a call

US 1 800 656 1918

Canada 1 855 300 7289

Worldwide +1 310 929 7085

For a list of all our customer support numbers, visit [ring.com/callus](https://ring.com/callus)

For information on our warranty, theft protection, and Ring Protect Plans, visit [ring.com/legal](https://ring.com/legal)

© 2021 Ring LLC or its affiliates.

Ring and all related marks are trademarks of Ring LLC or its affiliates.

XX-XXXXXX-XX

