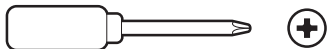


Tools needed

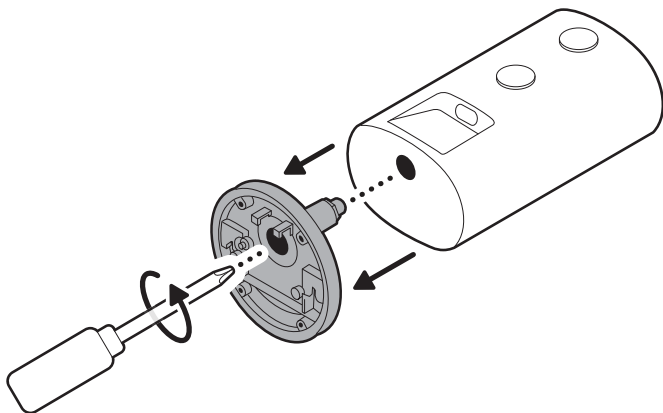


Phillips-head screwdriver

NOTE: Do not use a drill during installation. Using a drill may damage the lens cover or your device.

2.

Unscrew to detach the camera mount.

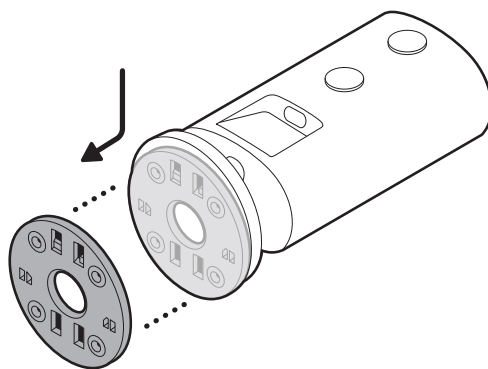


Flat installation

FOR INDOOR USE ONLY

1.

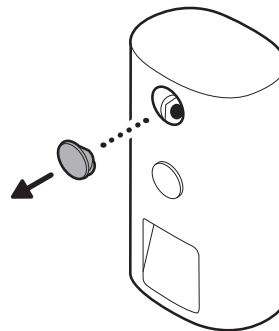
Slide the mounting plate in the direction opposite to the UP arrow to remove.



3.

Remove the top rubber cap on the back of your camera.

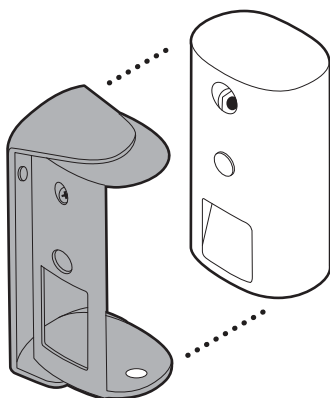
NOTE: Store the rubber cap in a safe place. Reinsert when the hole is not in use.



4.

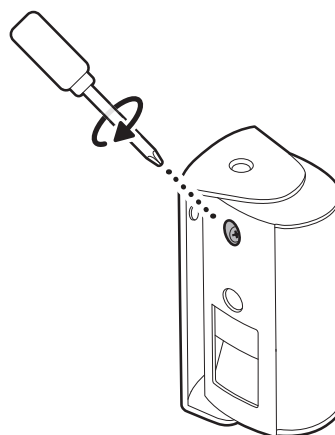
Place your lens cover on your camera in the open position.

NOTE: Unplug your power cable, if necessary.



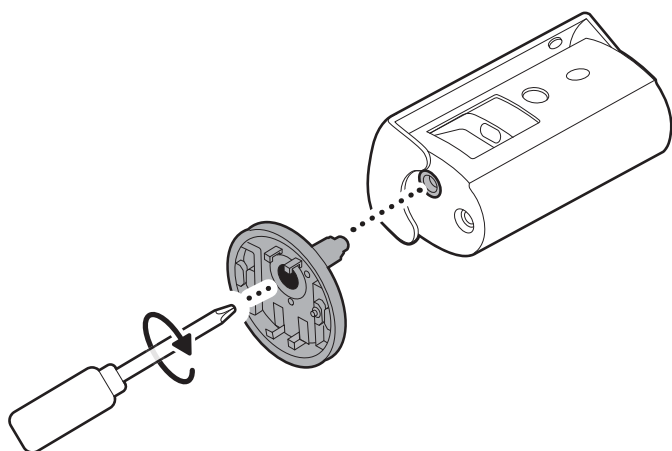
5.

Tighten the screw into the top hole on the back of your camera to secure.



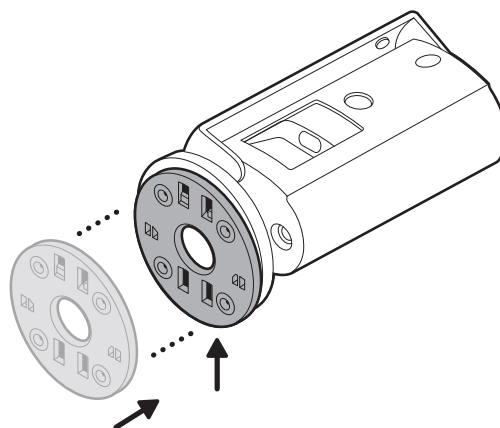
6.

Attach the mount to the bottom of your camera with its screw.



7.

Reattach the mounting plate by sliding until you hear a click to secure.

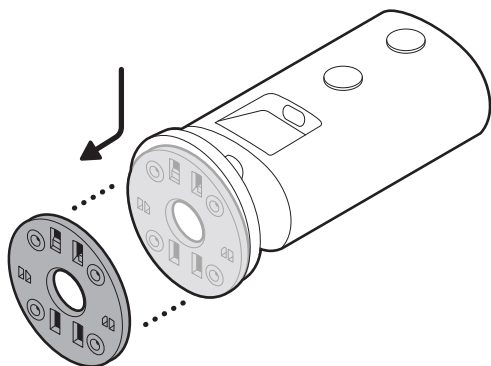


Wall installation

FOR INDOOR USE ONLY

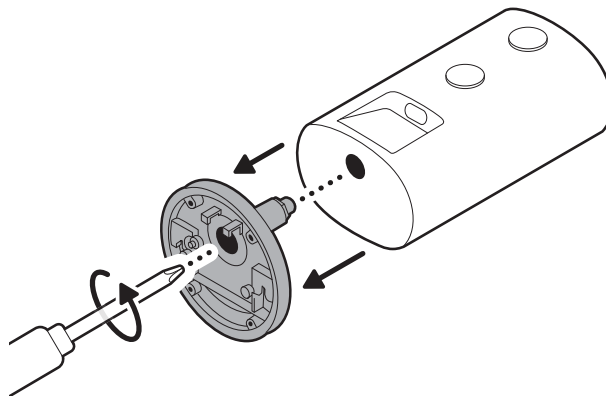
1.

Slide the mounting plate in the direction opposite to the UP arrow to remove.



2.

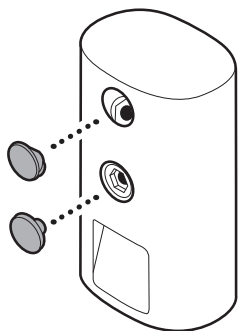
Unscrew to detach the camera mount.



3.

Remove the two rubber caps on the back of your camera.

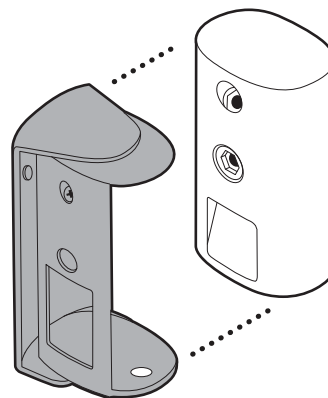
NOTE: Store the rubber caps in a safe place. Reinsert when the hole is not in use.



4.

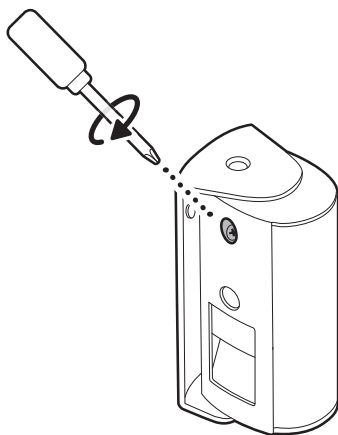
Place your lens cover on your camera in the open position.

NOTE: Unplug your power cable, if necessary.



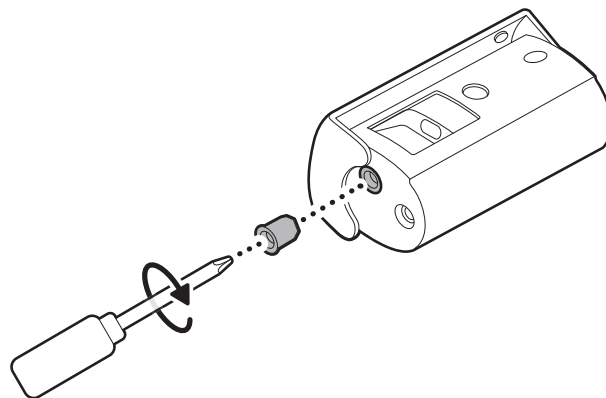
5.

Tighten the screw into the top hole on the back of your camera to secure.



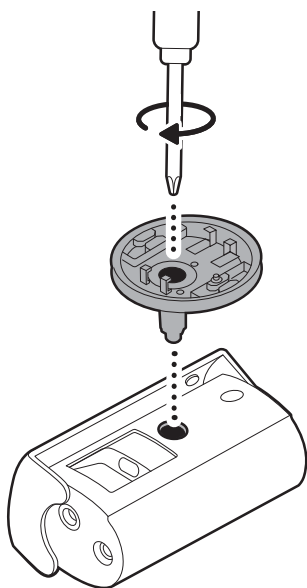
6.

Attach the screw cap to the bottom of your camera.



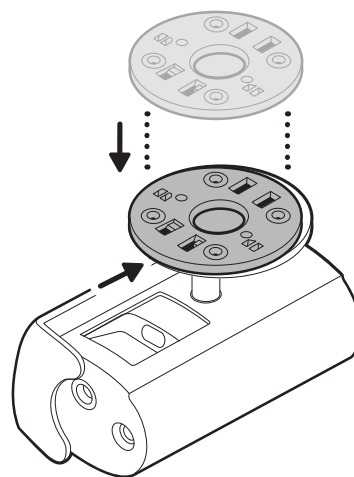
7.

Attach the camera mount to the back of your camera with its screw.



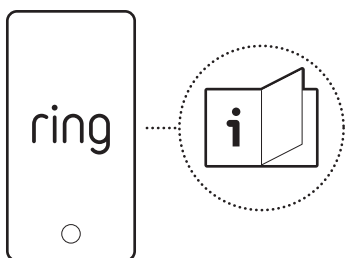
8.

Reattach the mounting plate by sliding until you hear a click to secure.



9.

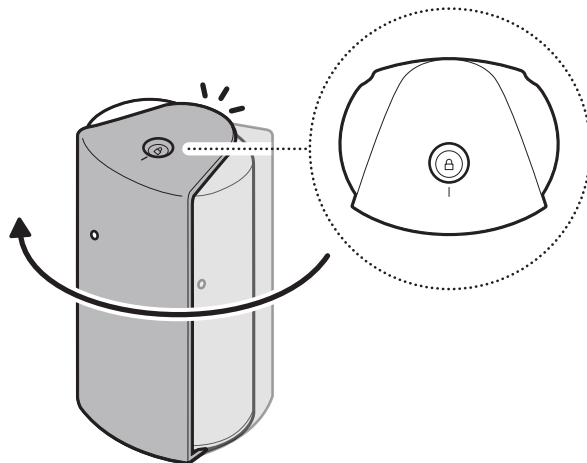
Refer to your camera setup guide to attach your camera to the wall.



Using the lens cover

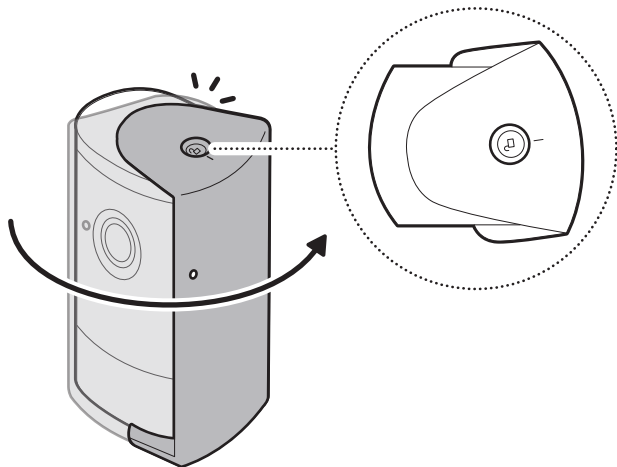
1.

To cover your camera, slide the lens cover to the locked position until you feel a click.



2.

To uncover your camera, slide the lens cover to the unlocked position until you feel a click.

ring.com/contactring.com/help

Ring LLC 12515 Cerise Ave, Hawthorne, CA, 90250 USA

Ring LLC / Amazon EU S.à.r.l., 38 Avenue John F. Kennedy, L-1855 Luxembourg / Amazon UK, 1 Principal Place, Worship Street, London, EC2A 2FA, United Kingdom

アマゾンジャパン合同会社 〒153-0064 東京都目黒区下目黒1-8-1

شركة Ring LLC طريق سيريس مينوي 12515 مدينة هاثورن، كاليفورنيا، 90250، الولايات المتحدة الأمريكية.
©2025 Ring LLC or its affiliates. Ring and all related marks are trademarks of Ring LLC or its affiliates.

©2025 Ring LLC又はその関連会社。Ring及びこれらに関するすべての商標は、Ring LLC又はその関連会社の商標です。

