



ring.com/help



1 800 656 1918



1 855 300 7289



+44 1727 26 3045



+800 8700 9781

ring

Ring LLC

1523 26th St.
Santa Monica, CA
90404 USA

Singel 542
1017 AZ Amsterdam
The Netherlands

©2020 Ring LLC or its affiliates. Ring and all related marks are trademarks of Ring LLC or its affiliates.




JSBK21251

ring

Video Doorbell 3 Plus



JSBK21251_MANUAL_RING SCALLOP PLUS FRCA _JUPITER

 INNOVATIVE, SUSTAINABLE PACKAGING SOLUTIONS		R1 加料号 R2 客更新文件	OFFSET  4 COLOR PROCESS CYAN MAGENTA YELLOW BLACK PANTONE 7689 C PANTONE Cool Gray 11 C	 DIE LINE NO PRINT	IMPORTANT PRINTER CAUTION! BARCODES PHYSICALLY SCAN AND CONFIRM ALL BAR CODES ARE CORRECT BEFORE MASS PRINTING. PLEASE DO NOT SIMPLY READ THE NUMBERS AND ASSUME IT IS CORRECT. IF YOU ARE UNSURE, PLEASE STOP AND CONTACT YFYJUPITER.
JOB NUMBER:	CLIENT:	QC CHECKS: PLEASE INITIAL & DATE BELOW <input type="checkbox"/> <input type="checkbox"/> <input type="checkbox"/>	TOTAL INKS: 6 = CMYK + 2 Spots	VARNISH:	ATTENTION PRINTER! COLOR MATCHING PLEASE FOLLOW THE PANTONE CALLOUTS, INK STANDARDS OR DRAWDOWNS FOR MATCHING INK COLORS. YOU ARE EXPECTED TO ACHIEVE THE SPECIFIED STANDARDS REGARDLESS OF SUBSTRATE AND VARNISH.
ART FILE NAME: JSBK21251_MANUAL_RING SCALLOP PLUS FRCA _JUPITER_R2			SUBSTRATE:	PRINTS:	
CLIENT BRAND:	SUPPLIER:		PRINTER NAME:	TOLERANCE: +/- 1mm	
BARCODE (UPC):	ITEM NUMBER:				
PACKAGE TYPE:	PACKAGE DIMS: 00.00 in x 00.00 in				



Start with the Ring app.

You can get it from the App Store or Google Play Store. In the app, create your Ring account, then tap **Set Up a Device** and select **Doorbells**.

For simple installation instructions, turn to page 7.



Comience con la aplicación Ring.

Puede obtenerlo en App Store o Google Play Store. En la aplicación, crea tu cuenta de timbre, luego toca **Añadir un producto Ring** y selecciona **Videotimbres**.

Para instrucciones de instalación simples, vaya a la página 7.



Beginnen Sie mit der Ring app.

Sie können diese aus dem App Store oder Google Play Store herunterladen. Erstellen Sie in der App Ihr Ring-Konto und tippen sie dann auf **Ein Ring-Produkt hinzufügen** und wählen sie **Türklingeln**.

Blättern Sie auf Seite 7 für einfache Installationsanweisungen.



Commencez avec l'application Ring.

Vous pouvez l'obtenir depuis l'App Store ou Google Play Store. Dans l'application, créez votre compte Ring, puis tapez **Ajouter un produit Ring** et sélectionnez **Doorbells**.

Pour des instructions d'installation simples, reportez-vous à la page 7.



Inizia con l'app Ring.

Puoi scaricarla dall'App Store o dal Google Play Store.
Nell'app, crea il tuo account Ring, quindi clicca **Aggiungi un prodotto Ring** e seleziona **Campanelli**.

**Per le istruzioni di installazione semplici,
vai a pagina 7.**



Start med Ring app.

Du kan hente den ned fra App Store eller Google Play Butik.
Opret dit Ring-konto i appen, tryk så på **Add a Ring Product** (opsætning) og vælg **Doorbells** (dørklokker).

**For enkle installationsanvisninger,
drej til side 7.**



Aloita Ring-sovelluksella.

Voit hankkia sen App Storesta tai Google Play Storesta.
Luo sovelluksessa Ring-tilisi ja napsauta sitten **Add a Ring Product** (asennus-kohtaa) ja valitse **Doorbells** (ovikellot).

**Käännä sivulle 7 yksinkertaisia
asennusohjeita varten.**



Aan de slag met de Ring-app.

Download the app in de App Store of Google Play Store.
Maak in de App je Ring-account, kies **Add a Ring Product** (instellen) en selecteer **Doorbells** (deurbellen).

**Ga naar pagina 7 voor eenvoudige
installatie- instructies.**



Start med Ring app.

Du kan laste ned appen fra App Store eller Google Play Store. Opprett en Ring-konto i appen, klikk deretter på **Add a Ring Product** (oppsett) og velg **Doorbells** (dørklokker).

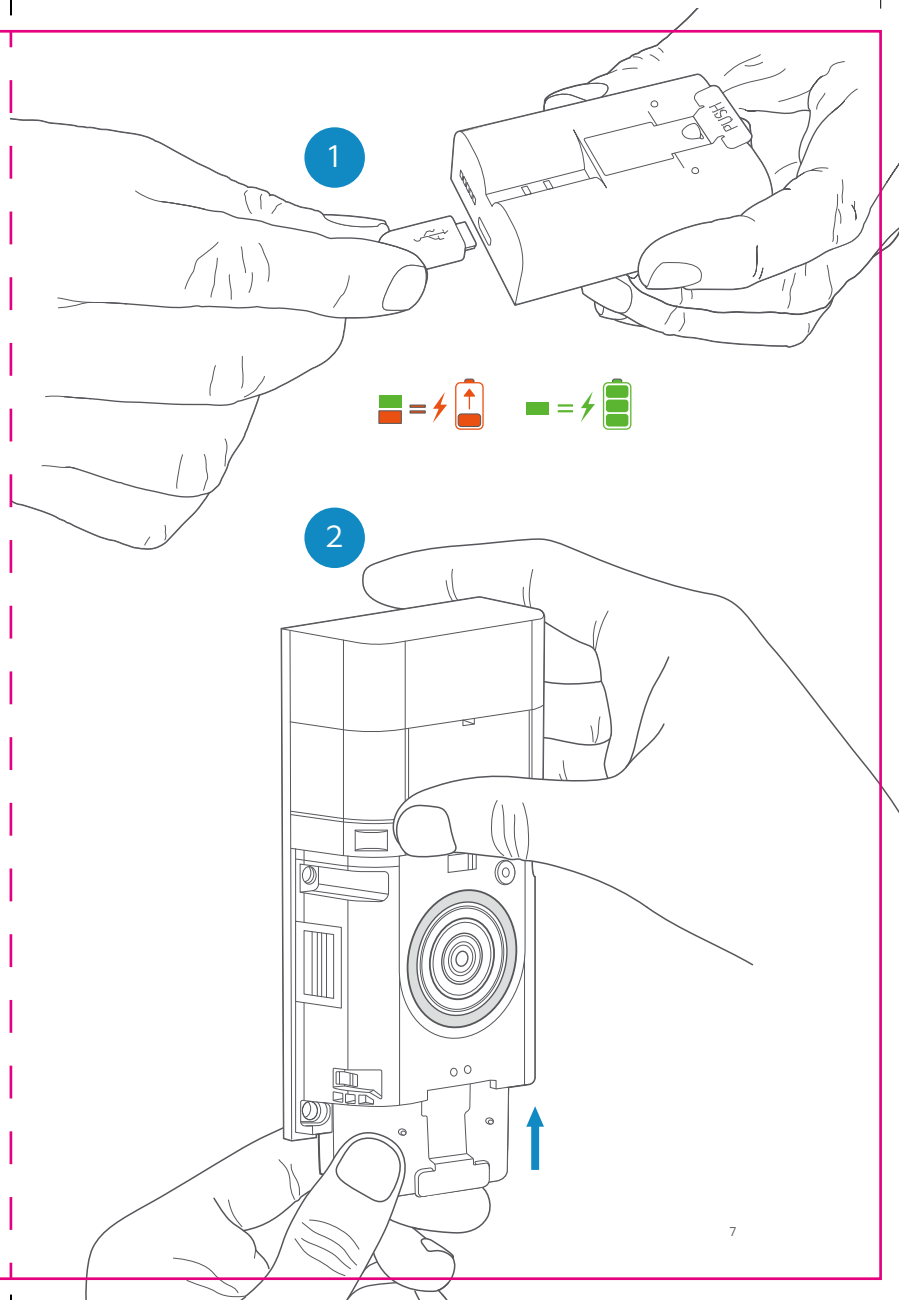
For enkle installeringsinstruksjoner, gå til side 7.

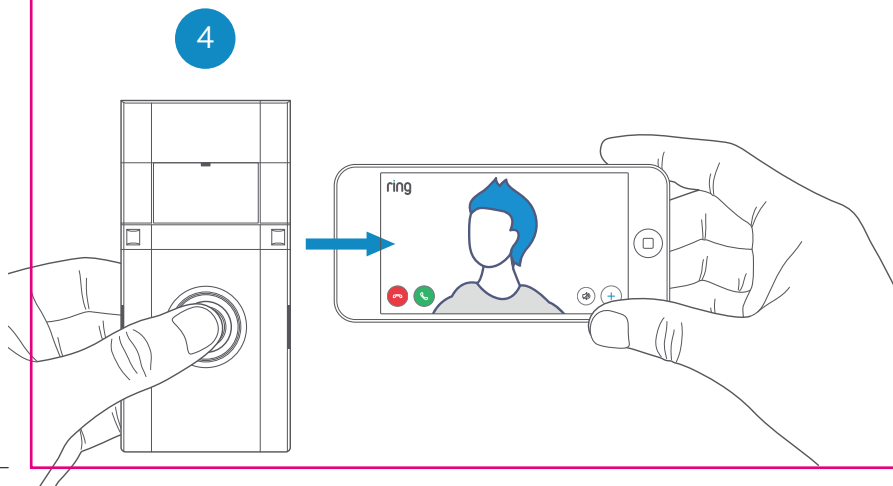
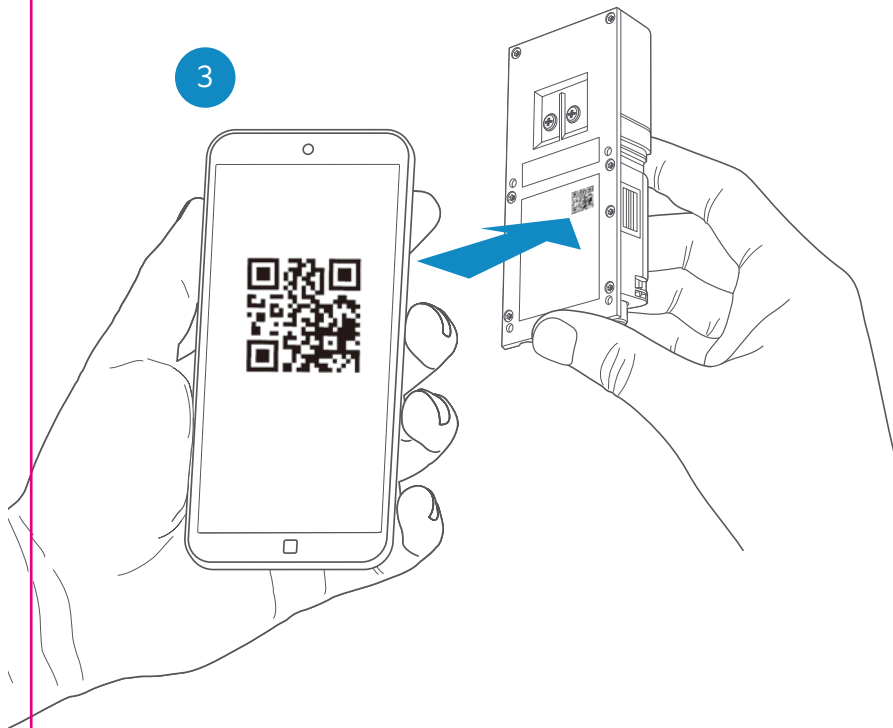


Starta med RING app.

Du kan hämta den från App Store eller i Google Play Store. I appen skapar du ditt RING konto, trycker sedan på **Add a Ring Product** (inrätta) och väljer **Doorbells** (dörrklockor).

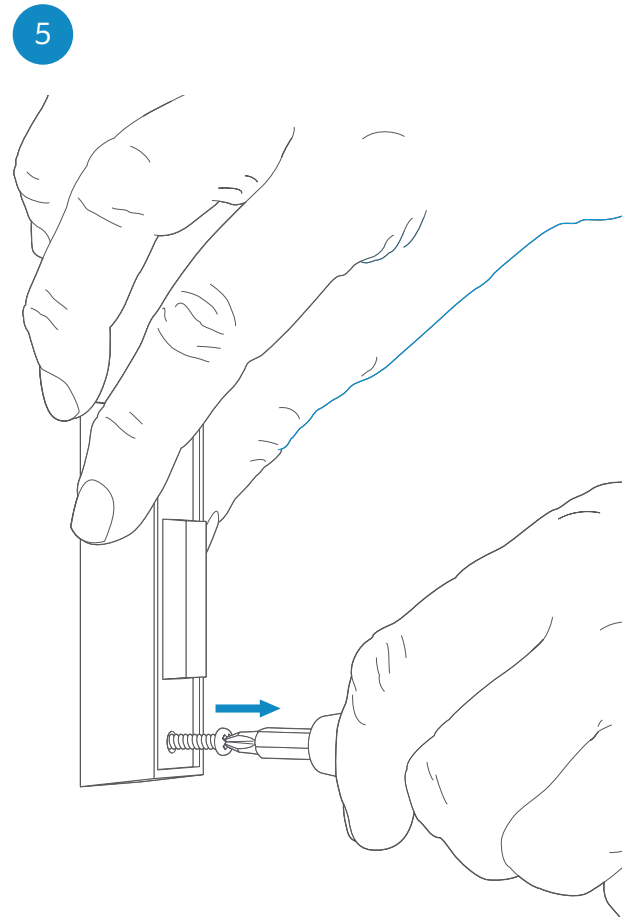
För enklare installationsanvisningar, gå till sidan 7.



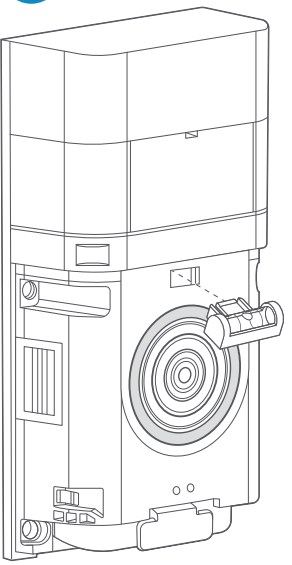


If wiring to an existing doorbell...
Si se cablea a un timbre existente...
Si câbleage à une sonnette existante...
Bei Verbindung mit einer bestehenden Türklingel...
Se collegato a citofono esistente...

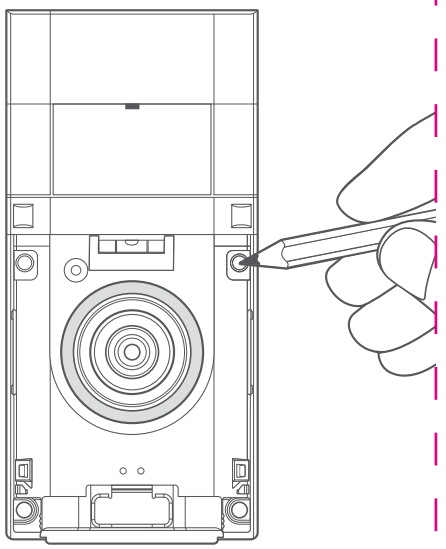
Bij aansluiting op een bestaande bel...
Hvis ledningerne trækkes til en eksisterende dørklokke...
Johdotus nykyiseen ovikelloon...
Dersom man kobler til en eksisterende ringeklokke...
Vid anslutning till dörrklocka...



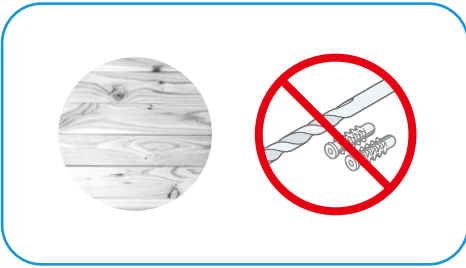
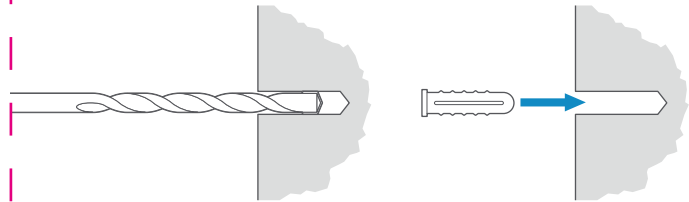
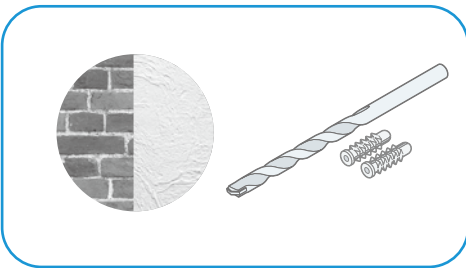
6



7



8



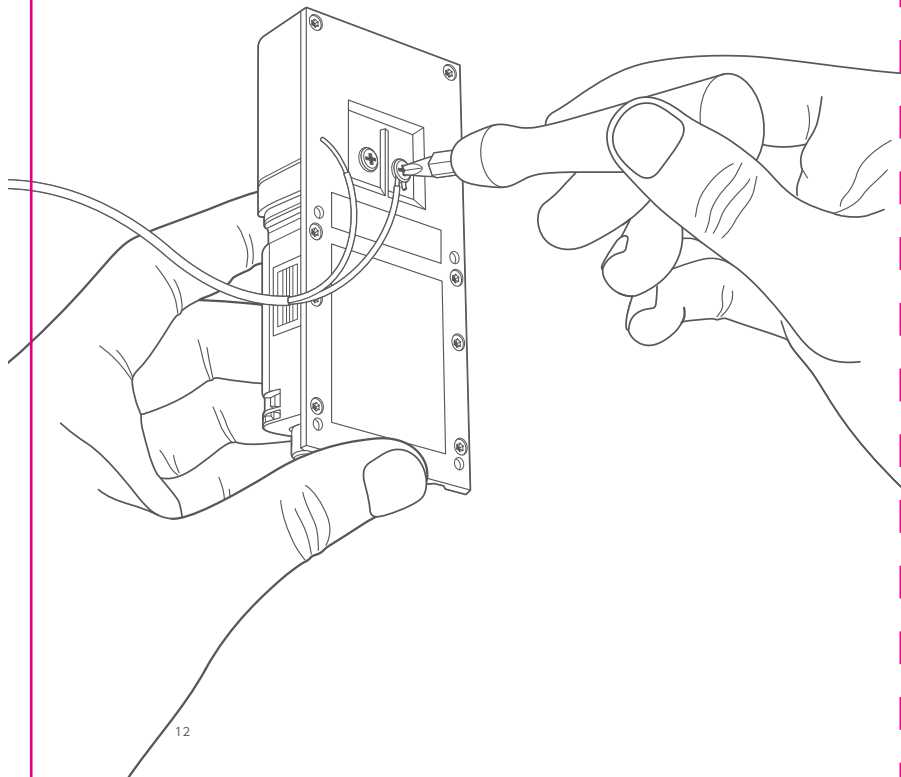


If wiring to an existing doorbell...
Si se cablea a un timbre existente...
Si câblage à une sonnette existante...
Bei Verbindung mit einer bestehenden Türklingel...
Se collegato a citofono esistente...

Bij aansluiting op een bestaande bel...
Hvis ledningerne trækkes til en eksisterende dørklokke...
Johdotus nykyiseen ovikelloon...
Dersom man kobler til en eksisterende ringeklokke...
Vid anslutning till dörrklocka...

9

- Option 1
- Opción 1
- Opzione 1
- Optie 1
- Mulighed 1
- Vaihtoehto 1
- Alternativ 1

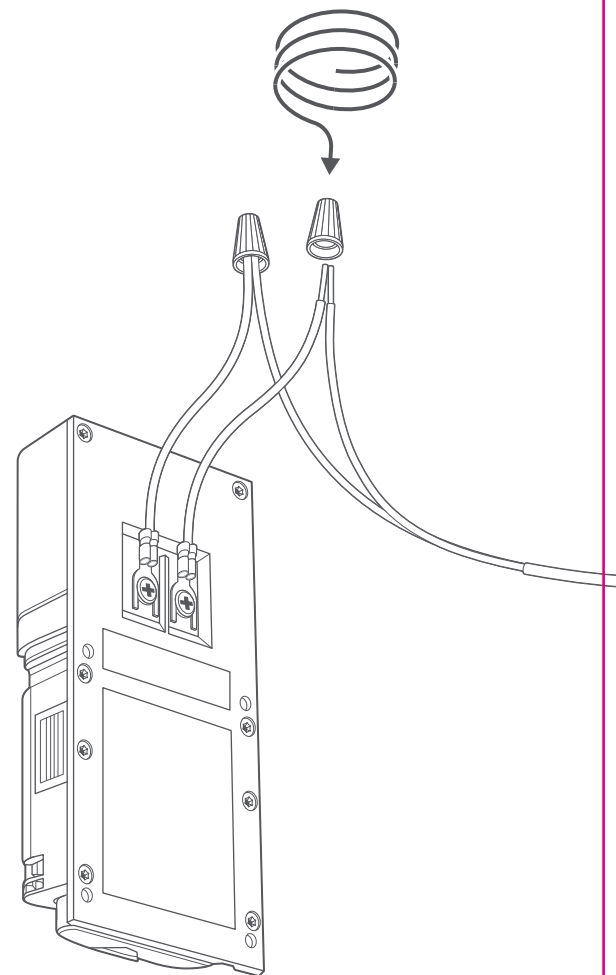


If wiring to an existing doorbell...
Si se cablea a un timbre existente...
Si câblage à une sonnette existante...
Bei Verbindung mit einer bestehenden Türklingel...
Se collegato a citofono esistente...

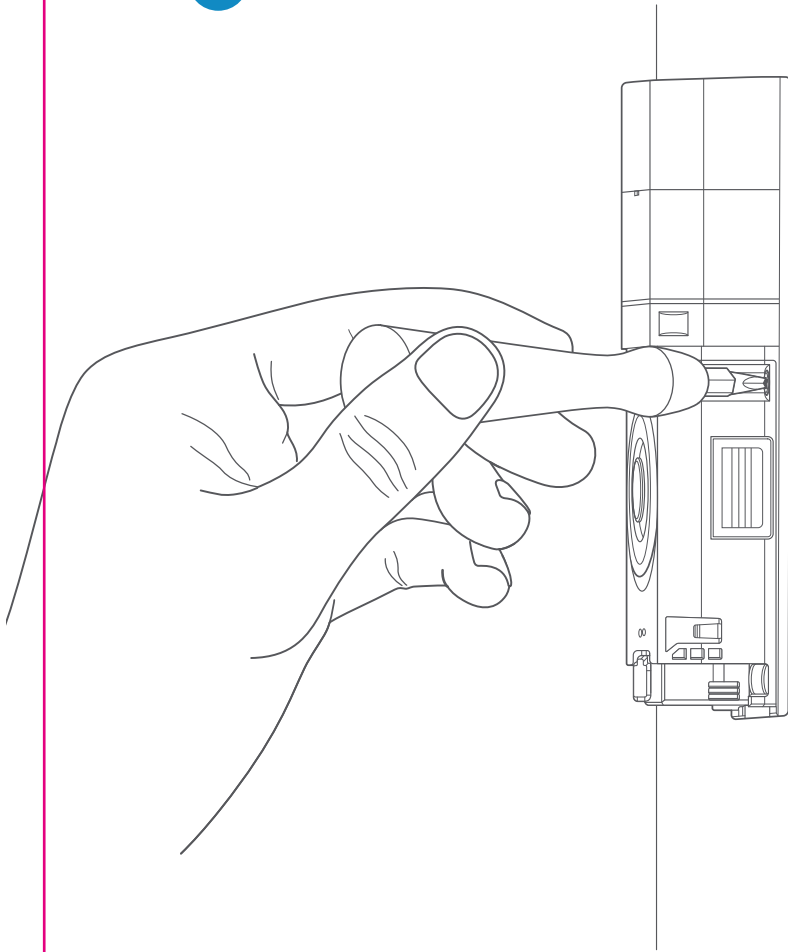
Bij aansluiting op een bestaande bel...
Hvis ledningerne trækkes til en eksisterende dørklokke...
Johdotus nykyiseen ovikelloon...
Dersom man kobler til en eksisterende ringeklokke...
Vid anslutning till dörrklocka...

9

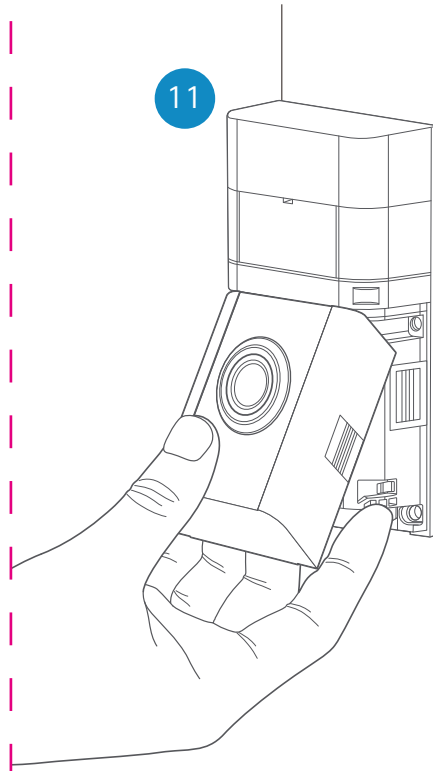
- Option 2
- Opción 2
- Opzione 2
- Optie 2
- Mulighed 2
- Vaihtoehto 2
- Alternativ 2



10



11



12

